

韻律體操

技術手冊

2017 臺北世界大學運動會



Taipei 2017 Summer Universiade Technical Handbook Rhythmic Gymnastics

韻律體操 技術手冊 2017 臺北世界大學運動會 4102



Taipei 2017 Summer Universiade

Technical Handbook

Rhythmic Gymnastics



FISU OFFICIAL PARTNER



Premium Official Partner



Pan German Motors Ltd.



CHINA AIRLINES



Uni-President Group



FU HSUN FIBER INDUSTRIES



中華電信
Chungwa Telecom

Official Partner



揚昇集團
SUNRISE GROUP



Fubon Financial



台灣高鐵
TAIWAN HIGH SPEED RAIL



GOLITE®



中保無限



台灣中油股份有限公司
CPC Corporation, Taiwan



昇恒昌



TaiShan

Official Supplier



LEALEA GROUP



BIO



iROO



NMP



VICTOR



TIS JVC



MEDiatek
聯發科技



acer



悠遊卡公司
EasiCard Corp.



匯豐銀行
HSBC



Technical
Seed Inc.



TAIPEI 101

Contents

1. WELCOME MESSAGES	4
1.1 FISU President	6
1.2 Organizing Committee Chairperson	8
2. ABBREVIATIONS	10
3. CONTACTS	12
3.1 International University Sports Federation (FISU)	13
3.2 Taipei 2017 Summer Universiade Organizing Committee	13
3.3 Fédération Internationale de Gymnastique (FIG)	13
4. GENERAL INFORMATION	14
4.1 Chinese Taipei	15
4.2 Summer Universiade Key Facts and Figures	17
5. SERVICE INFORMATION	18
5.1 Arrival and Departure	19
5.2 Athletes' Village	19
5.3 Accreditation	20
5.4 Transportation	27
5.5 Catering	28
5.6 Medical	30
5.7 Tickets	33
5.8 Weather information	34

6. COMPETITION INFORMATION	36
6.1 Technical Committee	38
6.2 Technical Regulations	38
6.3 Competition Format	40
6.4 Sport Entries and Eligibility	45
6.5 Competition and Training Venue Information	47
6.6 Competition Schedule	47
6.7 Training Schedule	50
6.8 Technical Meetings	51
6.9 Technical Officials	53
6.10 Protest and Appeals	54
6.11 Sport Equipment and Clothing	54
6.12 Doping Control	55
6.13 Awards and Medals	57
6.14 Press Interview	58
6.15 Sport Information Services	59
7. TRANSPORTATION SCHEDULE (DETAILED TIME RELATED TO THE COMPETITION)	60
8. MAPS	62
9. APPENDICES	66

1. WELCOME MESSAGES

1. WELCOME MESSAGES

1.1 FISU President

Dear friends,

On behalf of the International University Sports Federation (FISU), I am honoured to extend a warm welcome to the representatives of all nations coming to Taipei City in August 2017 for the 29th edition of the Summer Universiade.

This will be the largest international sporting event Chinese Taipei has ever hosted and promises to be an experience that will live long in the hearts of everyone involved. Taipei City is a city of youth, vitality, health, passion and friendliness. Furthermore, Chinese Taipei has dreamed about hosting a Universiade for well over a decade. Its time has now arrived and I am certain that this Universiade will not only inspire those of us lucky enough to be directly involved but also capture the imagination of the city's wider population, young and old, male and female, and elevate the city's sporting culture to an even higher level.

More than 7,000 student athletes across 22 sports will come together from across the globe to enjoy an atmosphere of fair play and friendship, as they pursue excellence in mind, body and lifestyle. FISU's vision is to create a world where every leader in society has been positively influenced by their experience of University sport. The Universiade is our greatest asset in reaching out to the students of the world, engaging them in sport and thereby helping them to become tomorrow's leaders.

And perhaps tomorrow's leaders are among those who will be competing, officiating, working, volunteering or supporting at this Summer Universiade.

It is important you all get the most from your experience here in Taipei City and this Technical Handbook is designed to help you achieve this.

The Guide is the collaborative work of the Taipei City 2017 Organising Committee and FISU's teams in Brussels and Lausanne, so thank you to everyone involved in its production and for your continued and excellent work in preparing for Taipei City 2017.

I would also like to thank all our partners and stakeholders for their enthusiastic and dedicated support of the event.

On behalf of the FISU family, I wish you the very best for a successful Summer Universiade. I look forward to your arrival in August 2017 and to celebrating the atmosphere of an international multi-sport event hosted in the University spirit.

Kindest regards

Oleg Matytsin
FISU President



1.2 Organizing Committee Chairperson

Dear participants of the Taipei 2017 Summer Universiade:

On behalf of the Taipei 2017 Summer Universiade Organizing Committee, I would like to extend our warmest welcome to all the athletes and delegates. Welcome to Taipei!

The Taipei 2017 Summer Universiade will be a showcase of youthful vitality and a celebration of sport that will make the dreams of youth come true. With guidance and assistance from the International University Sports Federation (FISU) we have completed thousands of preparatory tasks over the past six years. We have prepared a stage for you-athletes from all over the world-to show us your best. Taipei offers friendship, passion and vitality to the world in order to host a competition that will live on in the memory of all participants.

Taipei is a window onto Taiwanese culture. Chinese Taipei is an island in the heart of Asia. Being surrounded by the sea has given us the courage to face challenges and fostered a spirit of adventure. Through history, Chinese Taipei has been a melting pot for indigenous, Chinese, Japanese and many other cultures, giving rise to the rich and unique culture of today. In the summer of 2017, our world-class sporting arenas, staff, volunteers, and spectators will all participants with warm and open hearts.

Taipei has much to offer: world-famous Taiwanese cuisine, important historical sites, the safest tourist environment in the world, a convenient transport network, friendly and hospitable people, modern and fashionable shopping centres, and unique culture and scenery.

The Organizing Committee has prepared comfortable accommodation for participants. As the most important city in the international information industry, Taipei has one of the earliest and best citywide WiFi networks in the

world. The Athletes' Village and competition venues for overseas athletes provide excellent wireless coverage to enable you to stay in touch with people back home. In addition, we have also arranged interesting tours and cultural events so that you may explore Taipei culture, food and history, and experience our uniquely passionate, cultural and technological city.

Since I became Chairperson of the Taipei 2017 Summer Universiade, my team and I have worked hard to turn everyone's dreams into reality. Taipei is now ready to welcome the world with open arms. I would like to thank FISU and all our competitors for your support. We couldn't have done this without you. And to all the young athletes here today: I hope you set a new personal best here in Taipei. Enjoy the Taipei 2017 Summer Universiade and make memories you can cherish for the rest of your life!



Wen-Je Ko
Chairperson
Taipei 2017 Summer Universiade
Organizing Committee

2. ABBREVIATIONS

2. ABBREVIATIONS

Abbreviation	Name in Full
CF	FISU Finance Committee
CIC	FISU International Control Committee
CM	FISU Medical Committee
CMC	FISU Media and Communication Committee
CMI	FISU International Medical Committee
CSU	FISU Universiade Supervision Committee
CSU-E	FISU Summer Universiade Supervision Committee
CT	FISU Technical Committee
CTI	FISU International Technical Committee
CTI-UE	FISU International Technical Sub-Committee for the Summer Universiade
EC	FISU Executive Committee
FIG	Fédération Internationale de Gymnastique
FISU	Fédération Internationale du Sport Universitaire
HB	Host Broadcaster
HOD	Head of Delegation
IOC	International Olympic Committee
ISF	International Sports Federation
IT	Information Technology
ITO	International Technical Official
NSF	National Sports Federation
NTO	National Technical Official
NUSF	National University Sports Federation
OC	Organizing Committee
OVR	On-Venue Results
SIC	Sport Information Center
TD	Technical Delegate
TO	Technical Official
T&S	Timing and Scoring
WADA	World Anti-Doping Agency

3. CONTACTS

3. CONTACTS

3.1 International University Sports Federation (FISU)

President: Mr. Oleg Matytsin (RUS)
Secretary General/Chief Executive Officer: Mr. Eric Saintrond (BEL)
Address: Maison du Sport International, Av. de Rhodanie 54, CH-1007
Lausanne, Switzerland
Tel: +41(0) 216130810
Fax: +41(0) 216015612
E-mail: fisu@fisu.net
Website: <http://www.fisu.net>

3.2 Taipei 2017 Summer Universiade Organizing Committee

Chairperson: Mr. Wen-je Ko
Chief Executive Officer: Ms. Li-Chiung Su
Address: No.2, Sec. 4, Nanjing E. Rd., Songshan Dist., Taipei City
Tel: +886(0) 22570-7017
Fax: +886(0) 22570-7017
Website: <http://2017.taipei/bin/home.php>

3.3 Fédération Internationale de Gymnastique (FIG)

President: Morinari WATANABE(JPN)
Secretary General: Mr. André GUEISBUHLER (SUI)
Address: Avenue de la Gare 12, Case postale 630, 1001 Lausanne,
Switzerland
Tel: +41(0) 213215510
Fax: +41(0) 213215519
E-mail: info@fig-gymnastics.org
Website: <http://www.fig-gymnastics.com>

4. GENERAL INFORMATION

4. GENERAL INFORMATION

4.1 Chinese Taipei

4.1.1 Geographical overview

Chinese Taipei is located at the southeast of the Asian continent, between East and Southeast Asia island arcs on the west coast of the Pacific Ocean. The north is close to Japan and Ryukyu Islands, and the south connects to Philippines.

It is an important hub to travel back and forth everywhere in Asia. The land area is about 36,188 square kilometers and the length from north to south is about 395 kilometers. It is a long and narrow island in the north and south.

Chinese Taipei is located between Eurasia plate and Philippine Sea plate, so the complex and various landscapes in Chinese Taipei are formed, having mountains, hills, plains, basins, islands, ranges, coasts, and other landscapes.

4.1.2 Climate

Chinese Taipei is located in a subtropical area, and it is warm the whole year. The four seasons here are all like spring because the average temperature is 22 degrees. Because the summer is influenced by southwest monsoon and the winter is influenced by northeast monsoon, the plum rain season is in May and June, and the typhoons happen from July to September, abundant rain is brought to Chinese Taipei and the average rainfall per year is 2,515 cm.

4.1.3 Population, Ethnic group, and language

Population: about 23.54 million people (April 2017)

Ethnic group: The groups in Chinese Taipei are mainly Taiwanese, Hakka people, Taiwanese aborigines, and mainlanders.

Language: The official language in Chinese Taipei is Mandarin, and there are also Taiwanese, Hakka, and Austronesian language used by aborigines.

4.1.4 Brief introduction of Taipei City

Taipei City is located at the Taipei Basin, north of Chinese Taipei, and it is surrounded by New Taipei City. The population in Taipei City is about 2,692,118 (April 2017) and the total area is 271.7797 square kilometers. The density of the population is number one in Chinese Taipei, and is the political, economic, and cultural center of Chinese Taipei.

Taipei became the first special municipality of Chinese Taipei in 1967, and the flourish of economy and international trades for many years has made Taipei the political, financial, transportation, and cultural center of Chinese Taipei. The industrial structure is mainly the secondary industries and tertiary industries, and especially the tertiary has the largest working population. When facing the tread of integrating global economy areas in the future, Taipei City will enhance the development of finance, media, telecommunication, and other industries in order to grow to be an internationalized city. Moreover, Taipei City has abundant and developed traffic network, including MRT system, bus, railway system, airport, and others, which is modern city with complete functions, sound equipment, and prosperous economy.

The status of the religions in Taipei City is basically the same as that in Chinese Taipei, which are mainly Buddhism and Taoism. There are many famous temples in Taipei City, such as Zhinan Temple, Guandu Temple, Longshan Temple, and others. Moreover, the number of Christian and Islam believers in Taipei City is the greatest in Chinese Taipei, which means there is a diverse and flourishing religious culture.

The traveling culture in Taipei is very popular. There is the National Palace Museum that has an abundant collection, Taipei 101, the highest building in Chinese Taipei, or the night markets that have many local features are all the famous tourist spots in Taipei City. The convenient and dense transportation network can take travelers to all the spots quickly, and "Worldwide Index of Global Destination Cities 2014" rated Taipei as number six among the best Global Destination Cities in Asia-Pacific and only second to Hong Kong in Greater China, showing that Taipei has gradually become a great potential popular destination city in Asia-Pacific.

Climate data of August

The highest temperature (Celsius)	The average high temperature (Celsius)	The average low temperature (Celsius)	The lowest temperature (Celsius)	Rainfall (mm)	Humidity	Average sunshine hours per day in the month
39.3	33.8	26.1	18.9	322.1	74.1	188.9

4.1.5 More Information

Time Zone: GMT+8

Voltage: 110V/60Hz

Currency: The fiat currency is the New Taiwanese dollar, and it can be exchanged freely in most of the hotels and banks in Chinese Taipei.

Emergency contact:

- phone number inquiry 104
- English phone number inquiry 106
- Fire, Ambulance, Firefighting 119
- Police, Traffic Accident 110
- Emergency Rescue 112

For more information, please refer to <http://english.gov.taipei>

4.2 Summer Universiade Key Facts and Figures

4.2.1 The 29th Summer Universiade 2017 Taipei, Chinese Taipei

Date: August 19-30, 2017 (12 days)

Location: Taipei, Chinese Taipei

Sport Programme: 21+1 sports (14 compulsory / 7 optional / 1 demonstration) with 271+4 events

Venue: 38 competition venues, 41 training venues

4.2.2 Opening and Closing Ceremonies

Opening Ceremony

Location: Taipei, Taipei Municipal Stadium

Date: August 19, 2017 (Sat.) 18:00-21:30

Closing Ceremony

Location: Taipei, Taipei Municipal Stadium

Date: August 30, 2017 (Wed.) 18:30-21:30

5. SERVICE INFORMATION

5. SERVICE INFORMATION

5.1 Arrival and Departure

From August 12, 2017 to September 2, 2017, designated buses will be provided to pick up and drop off delegations with their luggage from Chinese Taipei Taoyuan International Airport or Taipei Songshan Airport to Linkou Athletes' Village.

Athletes can take their luggage (1 luggage with a maximum of 20kg allowed per person) with them to the AV by the bus. Only over-sized items, pre-registered on the arrival and departure information of the Accreditation System, will be transported by truck along with buses. Without pre-registered in advance, it would take time to arrange the service.

5.2 Athletes' Village

5.2.1 Overview

The village is located nearby the intersection of Wenhua 1st Rd. and Renai Rd. of Linkou district, New Taipei City. Its total area is approximately 20 hectares, which is divided into International Zone and Residential Zone, and it is aimed at providing accommodating delegations of the 29th Summer Universiade 2017 Taipei, Chinese Taipei. The Wi-Fi-enabled village comprises 34 buildings separated into West and East village and it will start operating and welcoming delegations on August 12, 2017. It will close on September 2, 2017.

5.2.2 International Zone

International Zone includes Main Accreditation Center, Guest Center, Main Information Center, Sport Information Center, Polyclinic, and other areas. Moreover, delegation and all kinds of social spaces, such as meeting rooms, Flag Plaza, are also located in International Zone.

The list of space is as follows: Guest Center, Media Area, Main Accreditation Center, Waiting Area, Main Information Center, Sport Information Center, Security Center, Polyclinic, Transportation Office Center, Volunteer Center, Delegation Office, International Conference Hall, Medium Meeting Room, Small Meeting Room, Flag Plaza, Warm Up Field.

5.2.3 Residential Zone

Residential Zone, the main region for delegations' living, includes residential buildings, Dining Hall, Fitness Center, and other areas.

The list of spaces is as follows: Residential buildings, Accommodation Service Desk, Delegation Medical Rooms, Athletes' Village Dining Hall, Laundry Center, Religious Center, Fitness Center, Doping Control Center, Warm Up Field, Game Room, Souvenir Shop, Bank, Post Office, Barber Shop, Dry Cleaning Center, Convenient Store, Telecom Center, Flower Shop.

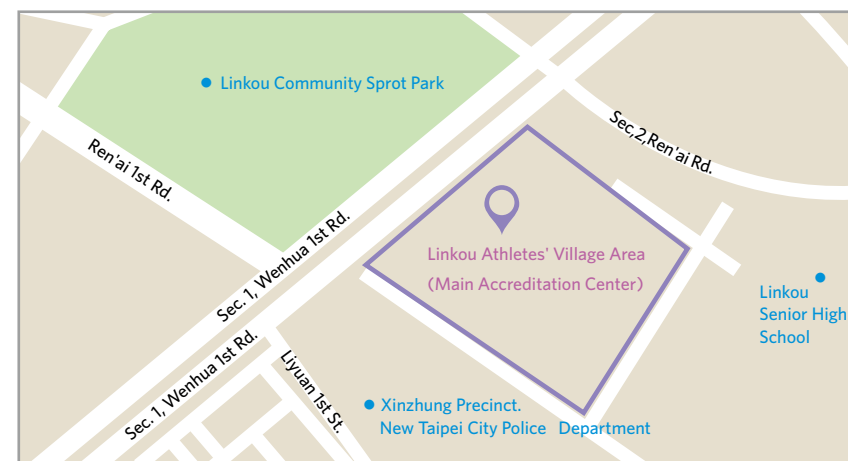
5.3 Accreditation

5.3.1 Brief introduction of accreditation centers

This is an Accreditation Center established by the Organizing Committee:

Name	Location	Address	Client Group	Operating Hours
Main Accreditation Center	Linkou Athletes' Village	The intersection of Wenhua 1st Road and Ren'ai Road, Linkou Dist., New Taipei City	Delegation Member	Aug. 12 - Sep. 2, 2017 (24 hr)

Location Map of the Main Accreditation Center (MAC)



Service of Accreditation Centers:

- ▶ Confirm the participants' data.
- ▶ Correct data and take photo on-site.
- ▶ Print, issue and reissue accreditation cards.
- ▶ Print day passes.
- ▶ Cancel invalid cards.
- ▶ Resolve accreditation related problems.
- ▶ Provide accreditation equipment and technical support.
- ▶ The Main Accreditation Center additionally provides the following services:
 - Print and issue temporary passes.
 - Deal with accommodation related matters.
 - Collect participation fees.
 - Examine the qualification for participating athletes (by the CIC).
 - Schedule an appointment for Welcome Ceremony.

5.3.2 Accreditation Cards

Code and Pictogram Illustration of Accreditation Cards

The information on the accreditation cards shows the rights and privileges of the cardholder, indicated by designations, codes, figures or pictograms.

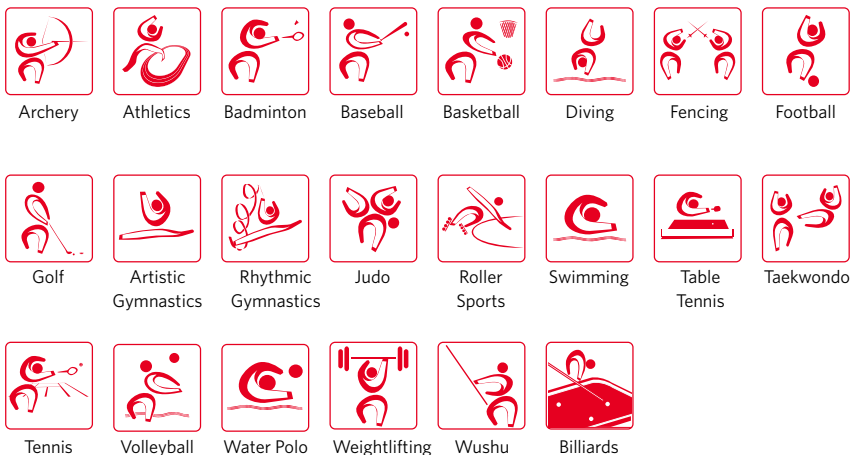
Venues

► Venue Code

The cardholder will have access to the competition venues indicated by the codes on the accreditation card.

Code	Meaning
∞	All Sports Venues
	Designated Venues
—	No Access

► Sport Pictograms



► Access Code of Competition Venue

The cardholder will have access to the specific area indicated by the codes on the accreditation card.

Code	Meaning
0	All Access
1	Competition Area
2	Athlete Preparation Area
3	Administration and Operation Area
4	Press Area
5	Broadcasting Area
6	Mixed Zone
7	VIP Area
-	No Access

► Seat Code

The seat codes on the accreditation card indicate the seats for the competition venue.

Code	Meaning
R	Reserved Seats
S	Special Seats
T	Ordinary Seats
U	Unreserved Seats
Z	No Seats
E	Journalist Seats
HB	Seats for the Host Broadcasters

Other Venues


Other venues include the Athletes' Village (AV) and Main Media Center (MMC).

► Athletes' Village (AV)

The access right within the Athletes' Village is indicated by the following codes on the accreditation card.

Code	Meaning
V	Village All Access
I	International Zone
-	No Access

Access to catering service in the Athletes' Village Restaurant is indicated by the following pictogram.

Code	Meaning
	Access to the Athletes' Village Restaurant

► Main Media Center (MMC)

The access right within the Main Media Center is indicated by the following codes on the bottom right corner of the accreditation card.

Code	Meaning
P	Main Press Center
B	International Broadcasting Center
—	No Access

Transport Code

Access to free transportation service is indicated by the following codes on the accreditation card.

Code	Meaning
T1	One vehicle for one VIP
T2	One vehicle for two or more VIPs

Code	Meaning
T3	Shared vehicle available on call or by advanced reservation
TA	Shuttle, team bus or delegation cars for athletes and delegation officials
TF	Bus for Technical Officials
TM	Shuttle bus for Media

5.3.3 Cards Lost or Damaged

Procedure for Re-issuance of Accreditation Cards

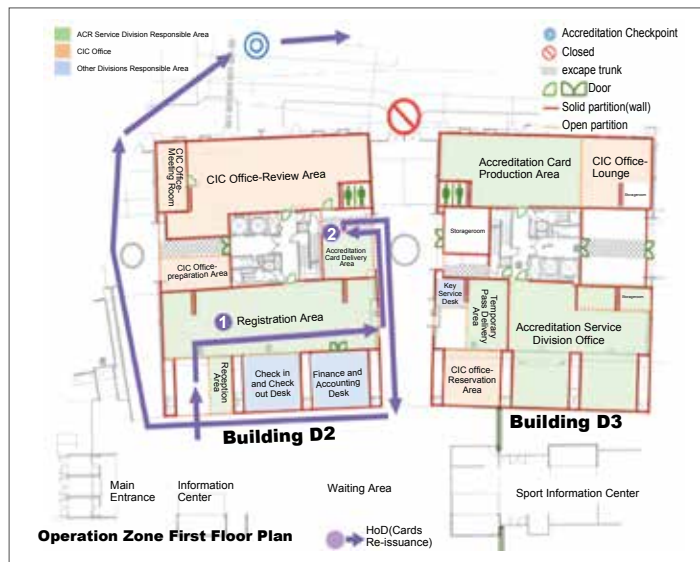


► Illustration of the Procedure

STEP1: Submit the application of re-issuance. The Head of Delegation should submit the application of re-issuance at the Registration Area of the Main Accreditation Center. The accreditation staff will cancel the lost accreditation card.

STEP3: Receive the accreditation card. After the CIC confirms the qualification of the applicant and activates the accreditation card, the new card will be delivered at the Accreditation Card Delivery Area.

Procedure for Replacement of Accreditation Cards



► Illustration of Procedure

STEP1: Submit the application of replacement. The Head of Delegation should bring the damaged accreditation card to the Registration Area of the Main Accreditation Center and fill out the application form for card replacement. The accreditation staff will cancel the damaged accreditation card.

STEP2: After the CIC activates the accreditation card, the new card will be delivered at the Accreditation Card Registration and Delivery Area.

5.4 Transportation

5.4.1 Athletes' and Delegation Officials

Provision of transportation services for athletes and delegation officials from August 12 to September 2, 2017 and the vehicle service time is from 07:00 to 23:00.

Please refer to the delegation transportation manual for further details.

5.4.2 Opening and Closing Ceremonies

Opening and closing ceremonies will be held in the Taipei Stadium. Buses will be divided into 4 groups. It will take about 60 minutes to Taipei Stadium. Please refer to the delegation transportation manual for further details.

5.4.3 Spectating athletes Transportation

Spectating athlete transportation is divided into team sport shuttle route and individual sport shuttle route. A shuttle bus service for team sport spectating will be provided according to the competition schedule. For spectating individual sports, please directly take an individual sport route shuttle bus.

Please refer to the delegation transportation manual for further details.

5.4.4 Delegation cars

Cars (including drivers) will be provided for delegation officials (refer to the following table) according to the size of the delegations. Delegation cars only serve for official Universiade-related schedules and are not for personal use (such as traveling and others).

Please refer to the delegation transportation manual for further details.

Size of delegation (Athletes and Officials)	Assigned Vehicle
5 to 24	1
25 to 49	2
50 to 99	3
100 to 149	4
150 to 199	5

Size of delegation (Athletes and Officials)	Assigned Vehicle
200 to 249	6
250 to 299	7
Over 300	8

5.5 Catering

5.5.1 Main Dining Hall

The Athletes' Village Dining Hall is located in a temporary tent on the north-side of the Athletes Village. There are 3500 seats to serve athletes, delegation officials and VIPs with buffet type of services.

The Dining Hall is only accessible to those who have a fork and knife symbol on their accreditation cards and their cards must be swiped to enter. No big items are allowed to be carried into the restaurant, such as backpacks and handbags, the size of which exceeds 30x20 centimeters. Any items exceeding this size limit must be checked in the Bag Check-In Area in the Athletes' Village Dining Hall.

To prevent illness caused by eating spoiled foods, only a piece of fruit, or a bottle of water/soft drink can be taken out of the Dining Hall. If an athlete can't go to the Dining Hall due to illness, food can be taken out for him/her under a certificated doctor's note.

Dining Hall Operation Hours

Date	August 12 - September 2, 2017	
Breakfast	Main meal	05:00-10:00
	Light meal	10:00-11:00
Lunch	Main meal	11:00-16:00
	Light meal	16:00-17:00
Dinner		17:00-24:00
Late-night snack		24:00-01:00

- ▶ The dinner operating time will be extended to 02:00 on the Opening/Closing Ceremony Night.
- ▶ For athletes attending Golf, Swimming-marathon swimming, Roller sports-marathon, Athletics-half-marathon and 20km walk competitions which are scheduled to start in the early morning from Aug. 24 to Aug. 27, the breakfast service will start from 03:30 on those dates.

5.5.2 Menu

The meal choice offered by the Dining Hall will include European/Mediterranean, Asian, Halal, vegetarian and local cuisines. The menu of each meal will be composed of starters, salads, main courses, side dishes, desserts and various seasonal fruits. The menu will be changed on a rotation of 7 days. A menu label alongside each menu item will list ingredients that may cause food allergy. If there is any concern, please consult with the dietician at the nutrition desk.

5.5.3 Self-Paid Dining

The lunch and dinner service will be also available on a user-pays basis in the Athletes' Village Dining Hall. Guests who are accredited to enter AV can buy a meal voucher at the catering service desk in the Main Information Center in advance, and the cost is NTD 800 per meal.

5.5.4 Meal Box

During the Universiade period (from Aug. 19 to 30), four choices of meal boxes with European/Mediterranean, Asian/Chinese, vegetarian, and Halal or Halal-friendly cuisines, will be provided. If athletes and delegation officials are unable to eat at the Dining Hall due to the competition schedule, delegation can pre-order the meal boxes at the venue meal box ordering website (www.catering.2017.taipei) before 2pm on the day before the meal boxes are needed. Please note that, if the order is made between 14:00 and 22:00, the venue meal box content will be only available with simple light foods (Late-Order Venue Meal Box).

Every delegation will only have one account. Delegation should place the order with the total VMB quantity of each venue and responsible for the order. Please note that the previous reserving data for each venue will be replaced by the latter one.

Should there be any problem with the venue meal box ordering website, delegations can also apply venue meal boxes to the Catering Service Desk (the Catering Service Desk is in Main Information Center of AV, operating from 07:00 to 22:00). The above-mentioned time constraint for venue meal box ordering still applies when ordering on site. The pre-order of the athletes' meal boxes must be made by filling out a duplicate application form. After confirming, the two hard copies will be stamped by the counter staff, with one copy being given to delegation and the other being filed in the catering service desk. To collect meal boxes at the competition venues, delegation must be signed for to confirm accuracy.

Venue meal boxes collecting time will be:

Lunch: 12:00 to 15:00.

Dinner: 18:00 to 20:00.

However, venue meal box services will only be available for the following sports because their competition schedules are overlapping with the main meal time. These sports include: Taekwondo, Archery, Table Tennis, Diving, Weightlifting, Athletics, Badminton, Tennis, Fencing, Rhythmic Gymnastics, Artistic Gymnastics, Judo, Wushu, and Billiards.

Microwave ovens will be available for providing hot meals at the competition venues that are allowed to serve meal boxes. The catering staff will help use the microwave to heat up the venue meal boxes for athletes and delegation officials.

5.6 Medical

5.6.1 Summary

Medical services will be provided at the Athletes' Village and at competition and training venues. Specific services offered will vary by the events, and follow-up medical care will be provided by designated hospitals. The Taipei Universiade Organizing Committee will be responsible for medical fees of competition-related injuries that are treated in compliance with the physicians of the medical office of the Organizing Committee. Except for in the circumstances described above, delegations are responsible for medical fees, and it is recommended that all delegations obtain medical insurance in advance of participation in the competition.

Delegation members should be vaccinated according to preventive vaccination requirements before attending Universiade. If any symptoms of physical illness at the arrivals, please immediately notify airport quarantine personnel, the delegation physician, or the director of delegation. The Organizing Committee has arranged food hygiene training and guidance, food hygiene inspections and random sampling, in order to, prevent food poisoning. Smoking is completely forbidden in the Athletes' Village and indoor venues. Smoking is also forbidden in outdoor venues outside of designated smoking areas.

5.6.2 Athletes' Village Polyclinic

The Polyclinic is located inside the International Zone of the Athletes' Village and offers the following services: General Medicine, General Surgery, Gynaecology, Orthopaedics, Sport Medicine, Ophthalmology, ENT (ear, nose, and throat), Dental, Chinese Medicine, and also Emergency room (24 hours), Pharmacy (24 hours), Diagnostic imaging (x-ray and ultrasound; 24 hours), Laboratory (24 hours), and Physiotherapy. The Polyclinic is equipped with overnight beds for acute medical problems not requiring hospitalization, Doping control room, and Interpreters. Ambulances are also available for medical emergencies. In addition, the Taipei Universiade Organizing Committee has designated the Linkou Chang Gung Memorial Hospital of the Chang Gung Medical Foundation as the designated hospital. Once a patient at the Polyclinic requires follow-up medical service, the patient will be sent to this hospital for treatment.

The Polyclinic will operate for a total of 22 days from August 12 through September 2. Outpatient service is available from 9:00 to 21:00 (exact operation hours for each department will be based on announcement).

Emergency room and some other medical services will be available 24 hours a day. The Organizing Committee will provide medical services for all registered delegation members.

5.6.3 Venue Medical Service

Each competition venue will have at least one athletes' medical station and one spectators' first-aid station. Each athletes' medical station will have one doctor and one nurse, emergency medical technicians (EMT) and physical therapists or athletic trainers to provide competing athletes

with on-site treatment, athletic physical therapy, and injury prevention services. Ambulances will also be available to assist with any emergency medical evacuation to the designated hospital. Chinese Medicine will be provided in three sports, including table tennis, badminton and tennis. The Chinese Medicine doctors provide acupoint massage, Chinese therapeutic manipulation, bandage and cupping service. The venue athletes' medical stations will operate from one hour before the start of competition until one hour after competition finish. See Medical Service Procedure on Figure

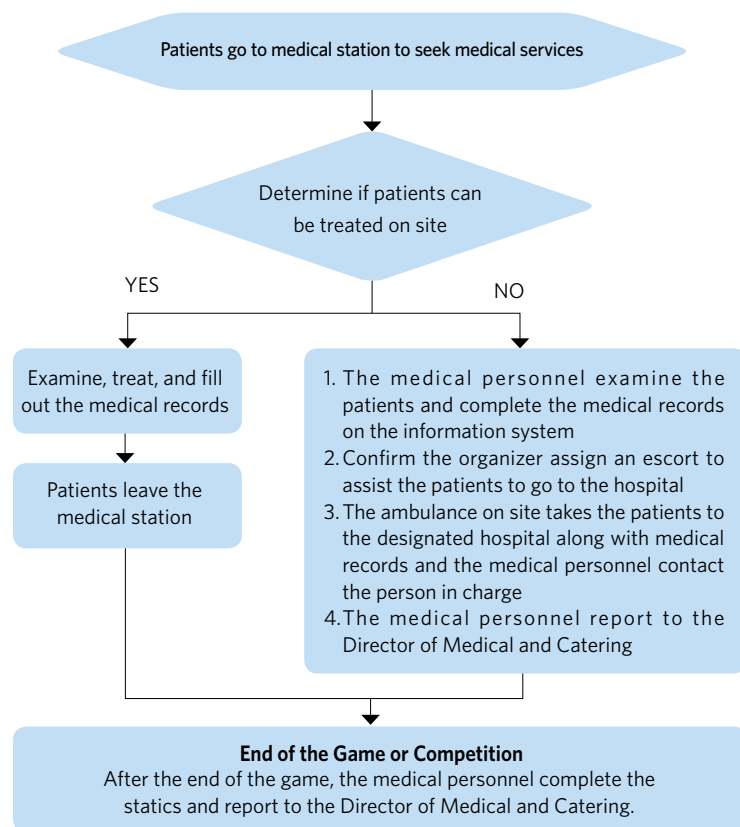


Figure 2017 Taipei Summer Universiade Treatment and Disposal of Patients Standard Operating Procedure

Each training venue will set up a first-aid station with nurses and EMTs to provide emergency care for athletes. Ambulances will also be available in case of emergency patients to the designated hospital. Doctors will also be stationed at the first-aid stations at some of the training venues depending on the needs. The training venue first-aid stations will operate from one hour before practice to 30 minutes after it.

5.6.4 Designated Hospital

Competition and training venues of the Taipei Universiade are located in Taipei City, New Taipei City, Taoyuan City, Hsinchu City, and Hsinchu County. There are 39 designated hospitals for the Universiade, all responsible for emergency service near their local venues. Designated hospitals will follow their agreements with the Organizing Committee to arrange Green Line for expedited services. Any registered delegation members who suffer urgent injuries or illness and require follow-up medical service will be sent to a suitable local designated hospital after triage.

5.7 Tickets

Delegations may access competition venues with their own AD cards to watch the competitions. There are reserve seats in each venue provided on a first come first served basis.

5.8 Weather information

5.8.1 Weather monitoring

- 1) Instant weather information will be provided for the 21+1 sport venues (including outdoor) and the opening and closing ceremony main venue (Taipei Stadium).
- 2) Earthquake warning information will be provided for the Main Information Center.
- 3) QPESUMS (Quantitative Precipitation Estimation and Segregation Using Multiple Sensors) stations along the half marathon, walking and roller skating marathon routes will provide related information and risk warning.



5.8.2 Weather forecast

- 1) Provide 1-month and 1-week weather forecast and explanation of the weather of the cities/counties where venues are located (Taipei to Hsinchu) and during the games with 3 hourly data for the first two days (including wind speed, wind direction, air pressure, temperature and humidity) in easy-to-understand language.
- 2) Provide high temperature instant message, thunder storm and torrential rain instant message and typhoon warnings.

5.8.3 Weather information dissemination

- 1) An exclusive Chinese-English Universiade Weather WEB APP is available for iOS and Android users.
- 2) Provide a weather service QR Code to athletes, coaches, media and guests to use.

5.8.4 Air quality forecast

Provide air pollution index air quality forecast and other information.

CHN



ENG



※QR CODE

6. COMPETITION INFORMATION

6. COMPETITION INFORMATION

6.1 Technical Committee

In accordance with Article 3.5.1 of the *Regulations for the 29th Summer Universiade 2017 Taipei City - Chinese Taipei*, there shall be a Technical Committee (CT) for each sport in the Summer Universiade program.

FISU Technical Delegate	Mr. Josef Robert ZELLWEGER (SUI)
FIG Technical Delegate	Marie Margrete HVEEM MOLTUBAKK (NOR)
Chinese Taipei Gymnastics Association Technical Delegate	Mr. Yu, Chih-Ying (TPE)
Organizing Committee Representative	Mrs. Wu, Hsiu-Tin (TPE)
Additional Experts	To be nominated at the 1 st General Technical Meeting, if needed

No more than two (2) members of the CT should be of the same nationality, not including the FISU Technical Delegate(s).

6.2 Technical Regulations

11.1 The sports events of the 29th Summer Universiade 2017 Taipei City - Chinese Taipei shall be organized in accordance with the most recent technical rules of the appropriate ISFs unless otherwise stated by the FISU Executive Committee.

12.8.1 The rhythmic gymnastics events will be organized in accordance with the most recent technical regulations of the "Fédération Internationale de Gymnastique" (FIG). In case of disagreement in the interpretation of these rules, the French text will be regarded as authoritative.

12.8.2 The program and duration of the competitions will be fixed by the FISU Executive Committee in agreement with the Organizing Committee and the CTI-UE. In principle, the program of the competitions will last three (3) days and include the following events for women:

- Individual All-Around Competition (Competition II)
- Individual Finals per Apparatus (Competition III)
- Group General Competition (Competition I)
- Group Finals per Apparatus (Competition III)

The four apparatus on the program for the competitions will be:

- Hoop
- Clubs
- Ball
- Ribbon

The group apparatus program for the competition will be:

- 5 Hoops
- 3 Balls + 2 Ropes

12.8.3 Individual All-Around Competition (Competition II)
Each participating country in Competition II may enter up to two (2) competitors.

The result will be established by adding up the points scored in competition II by each competitor on each apparatus.

All athletes must have a valid FIG license. The license number must be properly indicated on the individual entry form.

At the first General Technical Meeting, the Head of Delegation or his/her representative shall confirm and sign the official list of competitors.

Any entry not duly confirmed at the first General Technical Meeting, will not be taken into consideration except for force majeure.

12.8.4 Individual Finals per Apparatus (Competition III)
The best eight (8) gymnasts on each apparatus in competition II, with a maximum of two (2) gymnasts from each country, qualify to participate in competition III. Having qualified, the participation in competition III is mandatory.

The classification by apparatus will be determined by the points obtained in competition III on the respective apparatus.

12.8.5 Group General Competition (Competition I)
Each participating country is authorised to enter in the Group General Competition with one (1) group of six (6) gymnasts.

At the first General Technical Meeting, the Head of Delegation or his/her representative shall confirm and sign the official list of competitors except for force majeure.

Any entry not duly confirmed at the first General Technical Meeting, will not be taken into consideration.

12.8.6 Group finals per apparatus (Competition III)

The best eight (8) groups on each apparatus in the Group General Competition qualify to participate in the group finals per apparatus. Having qualified, the participation in competition III is mandatory.

The classification by apparatus will be determined by the points obtained in the group finals on the respective apparatus.

6.3 Competition Format

Competition

- Individual All-Around Competitions: Hoop, Ball, Clubs, Ribbon (Competition II);
- Individual Apparatus Finals: Hoop, Ball, Clubs, Ribbon (Competition III);
- Group General Competitions: 5 Hoops, 3 Balls and 2 Ropes (Competition I);
- Group Finals per Apparatus: 5 Hoops, 3 Balls and 2 Ropes (Competition III)

Drawing of Lots

The drawing of lots shall be conducted based on the final entries and abiding by the FIG Technical Regulations. The results will be informed to each participating federation.

Individual All-Around Competition (Competition II)

Each participating country in Competition II may enter up to two (2) gymnasts.

The result will be established by adding up the points scored in competition II by each gymnast on each apparatus.

Individual Finals per Apparatus (Competition III)

The best eight (8) gymnasts on each apparatus in competition II, with a

maximum of two (2) gymnasts from each country, qualify to participate in competition III. Having qualified, the participation in competition III is mandatory.

The classification by apparatus will be determined by the points obtained in competition III on the respective apparatus.

Group General Competition (Competition I)

Each participating country is authorised to enter in the Group multiple Competition with one (1) group of six (6) gymnasts.

Group Finals per Apparatus (Competition III)

The best eight (8) groups on each apparatus in the Group multiple Competition qualify to participate in the group finals per apparatus.

Having qualified, the participation in competition III is mandatory.

The classification by apparatus will be determined by the points obtained in the group finals on the respective apparatus.

Drawing of Lots for the Judges

The official drawing of lots of the judges will take place prior to each phase of competition.

Jury Composition

SUPERIOR JURY

(Refer to Technical Regulations Sect.1 and Sect.3).

JURY COMPOSITION for INDIVIDUALS AND GROUPS

Each Jury (Individuals and Groups) consists of 2 groups of judges: Difficulty and Execution.

Difficulty (D)

4 D judges divided in two sub-groups evaluate the Body and the Apparatus Difficulty.

The 1st sub-group (2 Judges) evaluates the entire exercise independently and then jointly determine the partial D-score content (One Single common score).

The 2nd sub-group (2 Judges) evaluates the entire exercise independently and then jointly determine the partial D-score content (One Single common score).

Execution (E)

6 judges divided in two sub-groups evaluate the Execution.

The 1st sub-group (2 Judges) evaluates the Artistic component independently and then jointly determines the Artistic penalties (one single common score).

The 2nd sub-group (4 Judges) evaluates independently the Technical faults by deduction. The average of the 2 middle scores is the partial E-score.

Artistic and Technical deductions are entered separately for the final Execution score. The E-score deductions will be the sum of the two partial E-score deductions.

The Final E- Score: Sum of the Artistic and Technical deductions are subtracted from 10.00 points.

2 reference judges will sit separately and independently evaluate technical faults. Each reference Judge gives one score. The average of the 2 score is reference score.

If the gap between the (avg.) "E" score and the (avg.) RE score exceeds the predefined permitted tolerances, the average of the RE and E scores will form the final E score.

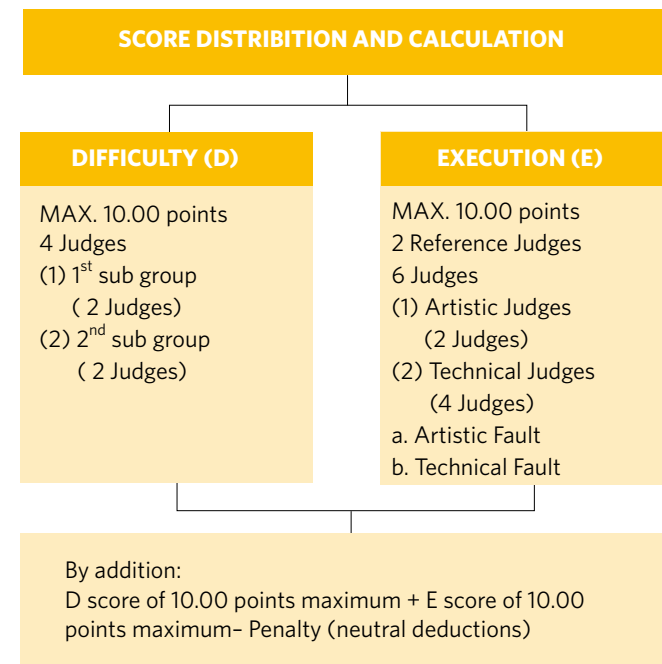
Line & Time judges (neutral penalties)

The two (2) Line judges determine on stepping outside of the border marking and acknowledge the fault by raising a flag.

The time judge (1) is required to time the duration of the exercise.

Time and Line penalties will be deducted from the addition of the final score. Finale score: Difficulty score + Execution score - Penalty (neutral deductions).

By addition: D score of 10.00 points maximum + E score of 10.00 points maximum.



JUDGE N°1 OF THE JURY (D) IS THE COORDINATOR JUDGE

The D1 Coordinator Judge will apply the penalties for leaving the floor area, timing of the exercises, and all the other penalties indicated in the table of penalties for Coordinator Judge.

The Superior Jury (4 Superior Judges and 1 Superior Judge President) must confirm the penalties given by the Coordinator Judge.

Competition Directives

Training

Gymnasts should train in designated Training Halls. They should be given the possibility, during training period, to have a preliminary examination to the apparatus according to the requirements of the Code of Points.

Judges' Instruction

At least one podium training course for judges will take place in the competition hall. The date and time will be decided by the FISU Technical Delegate.

New Elements

New elements, which are not in the current Code of Points, must be submitted 2 months before an official FIG competition to the FIG RG Technical Committee for the evaluation.

Access to FOP

Participating Gymnasts can enter into Field of Play (FOP).

The delegation participating in the individual competitions may enter into the FOP with one coach.

The delegation participating in the group competitions may enter into the FOP with one coach.

Other people who are allowed to enter are as follows: FISU officials, judges on duty, the staff of Organizing Committee and Timing & Scoring system, the staff of broadcasting TV Station, photographers and relevant persons who are approved by Organizing Committee.

Each participant will receive an ID card, on which the access to different areas will be shown.

Roll Call

Before each competition unit, the gymnasts shall enter the warm-up hall in the competition sequence. The first roll call will be made at the designated court in the warm-up hall. Ten minutes before the competition, the second roll call will be made at the entry of the competition hall. All gymnasts are required to follow the directions of the working staff.

Control of the Apparatus and Clothing

According to the requirements of the FIG regulations, there will be a zone of control for checking of the apparatus and clothing to be used by gymnasts. Each delegation shall receive the examination according to the schedule during the podium training. The checks shall also be conducted before each

exercise. If any dispute, a new control may be made at the end of an exercise.

Music

When the delegations arrive at the Universiade Village, the Heads of Delegations or representatives have to present the music for their gymnasts to the Sport Information Desk.

It will not be possible to use magnetic tapes (reel-to-reel), cassettes and no piano will be available.

2 copies of CDs for every apparatus have to be submitted.

The following information mentioned in the most recent Code of Points and the Technical Regulations must be clearly marked on the CD:

- Federation (Country or region abbreviation);
- Name of Gymnast;
- Title of Music;
- Symbols of Apparatus;
- Total Time;
- Composer.

An additional copy of the music is prepared for the training. The authorized sound level in the training and competition halls is limited to 80 dB resp. 1,000 Hertz (Hz).

6.4 Sport Entries and Eligibility

Participation

Only the following may participate as competitors in the Summer Universiade:

- a) Be a national of the country they represent;
- b) Be born between January 1, 1989 and December 31, 1999;
- c) Students who are currently officially registered as proceeding towards a degree or diploma at the university or similar institute, the status of which is recognised by the appropriate national academic authority of their country;
- d) Former students of the institutions mentioned in a who have obtained their academic degree or diploma in the year preceding the event.

In countries with fewer than 2,000,000 inhabitants or having fewer than 5,000 university students, students attending technical or secondary schools may participate in FISU events provided they have been attending their establishments for at least two (2) years. Such countries/regions must submit an application to the FISU Executive Committee at least six months before the scheduled start of the event. Such an application must be supported by documents endorsed by the appropriate State, Regional or National Academic Authorities.

Entry Timetable

Form	Deadline
Intention of Participation Form (PI)	November 19, 2016
General Entry Form (G)	January 19, 2017
Quantitative Entry Form (Q)	April 19, 2017
Individual Entry Form (I)	July 19, 2017
Final confirmation of the Athletes	1 st General Technical Meeting

Entries will be accepted only from those organizations which have been invited to participate. All delegations must ensure that all their entries reach the Organizing Committee by the deadline and in the form prescribed by the Organizing Committee and the FISU regulations.

Intention of Participation, General and Individual entries shall be submitted online in order to meet the required entry deadlines. Entries received after the required deadlines will not be taken into consideration, except in the event of force majeure, with the agreement of the FISU Executive Committee and on the advice of the Organizing Committee.

Individual entry forms of athletes from a non-member association must be countersigned by the NSF or by the NOC, and stamped with a seal from the said organization.

Late Athlete Replacement

All replacements requested by the NUSFs after the individual entry deadline of July 19, 2017 shall follow the Late Athlete Replacement Policy. Details of

the Late Athlete Replacement Policy are included in the *I-Form User Guide* which will be distributed on official website.

6.5 Competition and Training Venue Information

Venue	Function	Spectator Capacity	Distance to AV
4th Floor, Hall 1, TWTC Nangang Exhibition Hall	Competition (Training included)	3,500	30km (60mins)

6.6 Competition Schedule

Period: Aug. 27, 2017-Aug. 29, 2017, 3 Days

Date	Time	Event	Gender	Phase (Round)-Style	Venue
Aug. 27 (Sun.)	14:00	Individual All- Around	W	1 st rotation-Hoop & Ball	4F, Hall 1, Taipei Nangang Exhibition Center
	16:00	Individual All- Around	W	2 nd rotation-Hoop & Ball	4F, Hall 1, Taipei Nangang Exhibition Center
	18:30	Group All- Around Competition	W	5 Hoops	4F, Hall 1, Taipei Nangang Exhibition Center
Aug. 28 (Mon.)	14:00	Individual All- Around	W	1 st rotation-Clubs & Ribbon	4F, Hall 1, Taipei Nangang Exhibition Center
	16:00	Individual All- Around	W	2 nd rotation-Clubs & Ribbon	4F, Hall 1, Taipei Nangang Exhibition Center

Date	Time	Event	Gender	Phase (Round)-Style	Venue
Aug. 28 (Mon.)	18:30	Group All- Around	W	3 Balls+ 2 Ropes	4F, Hall 1, Taipei Nangang Exhibition Center
	19:30	Individual All- Around Medal Awarding Ceremony	W	Medal Awarding Ceremony	4F, Hall 1, Taipei Nangang Exhibition Center
		Group All- Around Medal Awarding Ceremony	W	Medal Awarding Ceremony	4F, Hall 1, Taipei Nangang Exhibition Center
Aug. 29 (Tue.)	14:00	Individual Apparatus Finals	W	Hoop	4F, Hall 1, Taipei Nangang Exhibition Center
	14:30	Individual Apparatus Finals	W	Ball	4F, Hall 1, Taipei Nangang Exhibition Center
	15:00	Group Apparatus Finals	W	5 Hoops	4F, Hall 1, Taipei Nangang Exhibition Center
	15:30	Individual Hoop Medal Awarding Ceremony	W	Medal Awarding Ceremony	4F, Hall 1, Taipei Nangang Exhibition Center
		Individual Ball Medal Awarding Ceremony	W	Medal Awarding Ceremony	4F, Hall 1, Taipei Nangang Exhibition Center

Date	Time	Event	Gender	Phase (Round)-Style	Venue
Aug. 29 (Tue.)	15:30	Group 5 Hoops Medal Awarding Ceremony	W	Medal Awarding Ceremony	4F, Hall 1, Taipei Nangang Exhibition Center
	16:30	Individual Apparatus Finals	W	Clubs	4F, Hall 1, Taipei Nangang Exhibition Center
	17:00	Individual Apparatus Finals	W	Ribbon	4F, Hall 1, Taipei Nangang Exhibition Center
	17:30	Group Apparatus Finals	W	3 Balls+ 2 Ropes	4F, Hall 1, Taipei Nangang Exhibition Center
	18:00	Individual Clubs Medal Awarding Ceremony	W	Medal Awarding Ceremony	4F, Hall 1, Taipei Nangang Exhibition Center
		Individual Ribbon Medal Awarding Ceremony	W	Medal Awarding Ceremony	4F, Hall 1, Taipei Nangang Exhibition Center
		Group 3 Balls+2 Ropes Medal Awarding Ceremony	W	Medal Awarding Ceremony	4F, Hall 1, Taipei Nangang Exhibition Center

6.7 Training Schedule

Time: Aug. 20, 2017-Aug. 29, 2017, 10 Days

Date	Time	Gender	Team	Venue	Remark
Aug. 20 (Sun.)	08:30-20:30	w	All Delegations	4F, Hall 1, Taipei Nangang Exhibition Center	4 Floors
Aug. 21 (Mon.)	08:30-20:30	w	All Delegations	4F, Hall 1, Taipei Nangang Exhibition Center	4 Floors
Aug. 22 (Tue.)	08:30-20:30	w	All Delegations	4F, Hall 1, Taipei Nangang Exhibition Center	4 Floors
Aug. 23 (Wed.)	08:30-20:30	w	All Delegations	4F, Hall 1, Taipei Nangang Exhibition Center	4 Floors
Aug. 24 (Thu.)	08:30-20:30	w	All Delegations	4F, Hall 1, Taipei Nangang Exhibition Center	4 Floors
Aug. 25 (Fri.)	10:00-18:00	w	All Delegations	4F, Hall 1, Taipei Nangang Exhibition Center	Podium
	08:10-17:25				6 Floors
Aug. 26 (Sat.)	10:00-18:00	w	All Delegations	4F, Hall 1, Taipei Nangang Exhibition Center	Podium
	08:10-17:25				6 Floors
Aug. 27 (Sun.)	08:30-11:30	w	All Delegations	4F, Hall 1, Taipei Nangang Exhibition Center	4 Floors
Aug. 28 (Mon.)	08:30-11:30	w	All Delegations	4F, Hall 1, Taipei Nangang Exhibition Center	4 Floors
Aug. 29 (Tue.)	08:30-11:30	w	All Delegations	4F, Hall 1, Taipei Nangang Exhibition Center	4 Floors

6.8 Technical Meetings

Date	Time	Meeting	Taipei Stadium 140 Room
Jul. 23 (Wed.)	10:00	Drawing of Lots	Taipei World Trade Center Nangang Exhibition Hall, Hall 1, 4F
Aug. 24 (Thu.)	16:00	Venue Inspection	
Aug. 24 (Thu.)	17:30	1 st Technical Committee Meeting	
Aug. 25 (Fri.)	10:00	1 st Podium Training	
Aug. 25 (Fri.)	14:00	General Technical Meeting	
Aug. 26 (Sat.)	10:00	2 nd Podium Training	
Aug. 26 (Sat.)	10:30	Judges' Meeting	
Aug. 27 (Sun.)	11:00	Judges' Meeting	
Aug. 28 (Mon.)	11:00	Judges' Meeting	
Aug. 29 (Tue.)	12:00	Judges' Meeting	
Aug. 30 (Wed.)	11:00	Final Technical Committee Meeting	

*Please note that the technical meeting schedule is subject to change.

Technical Meetings shall be held in accordance with Article 3.5 of the *Regulations for the 29th Summer Universiade 2017 Taipei City - Chinese Taipei*:

- 3.5.1 There shall be a Technical Committee (CT) for each sport in the program of a Summer Universiade which shall consist of:
- a) one (1) or, if designated, more FISU Technical Delegate(s) who will chair the CT (who shall be a member/members of the CTI-UE for the sport concerned);
 - b) one (1) representative of the Organizing Committee for the sport concerned;
 - c) the Technical Delegate of the appropriate NSF of the organizing country;

- d) the Technical Delegate of the appropriate ISF;
- e) additional experts who may be appointed to assist the Technical Committee as appropriate.

The Technical Committee will be assisted in its work by adequate personnel.

The Organizing Committee shall appoint one administrative secretary to the Technical Committee who shall take the minutes of all meetings.

No more than two (2) members of the CT should be of the same nationality, not including the FISU Technical Delegate(s).

- 3.5.2 During the days prior to the start of the sports events for which s/he is responsible for, the FISU Technical Delegate(s) shall convene the following meetings:
 - a) the meeting of the Technical Committee, which the staff members of the Organizing Committee for the sport concerned may also attend as observers;
 - b) the first (1st) General Technical Meeting, to which the members of the Technical Committee and a representative from each country competing in the sport concerned shall be invited.
- 3.5.3 The first (1st) meeting of the Technical Committee shall:
 - a) prepare the first (1st) General Technical Meeting;
 - b) define the criteria to set up a jury of appeal (if appropriate according to the rules and regulations of the ISF);
 - c) decide on the appointment system for technical officials (TOs);
 - d) approve the detailed program for their sport;
 - e) propose the nomination of additional experts to assist the Technical Committee as appropriate.
- 3.5.4 The first (1st) General Technical Meeting must:
 - a) approve the daily timetable for their sports;
 - b) appoint a jury of appeal, if appropriate, according to the rules of the ISF of the sport concerned.
 - c) take, if necessary, the emergency measures in order to ensure the smooth technical running of the events;

- d) confirm the official list of the competitors who will take part in the competitions. The Head of Delegation or his/her representative shall confirm the attendance of their country's athletes for the sport concerned by signing the said list and, if required, by filling in an entry form. No changes shall be made to the list after the General Technical Meeting.

Exceptions shall only be permitted if stated in the technical regulations of the sport concerned.

This entry form shall contain the accreditation card number attributed to the participant by the CIC, the given name, the family name and the competitor's number.

The competitors that are not approved by the CIC will not be authorised to take part in the competition.

- 3.5.5 The Technical Committee is responsible for determining the appointment system of technical officials for each competition.

6.9 Technical Officials

Technical officials shall be appointed in accordance with the *Regulations for the 29th Summer Universiade 2017 Taipei City - Chinese Taipei*:

- 12.8.8 Nomination

All international judges are nominated by FIG. Participating countries must pay an ITO contribution fee to the Organizing Committee in order to cover the cost (travel, accommodation, full board and a per-diem according to the FISU-FIG partnership agreement) of (18) international judges from FIG (cf. Art. 11.10) according to the pro-rata of athletes registered.

The ITO contribution fee for Rhythmic Gymnastics is EUR 310 per athlete and will be deducted from the team sports deposit.

The OC and the NSF will appoint NTOs to complement the team of technical officials required for Rhythmic Gymnastics.
- 12.8.9 Number of Technical Officials

There shall be thirteen (18) FIG Judges:

- R-judges
- D-judges
- E-judges
- Line Judges
- Timekeeper

The number of NTOs shall be agreed between the OC and the FISU TD.

6.10 Protest and Appeals

Protest and Appeals shall be conducted in accordance with the *Regulations for the 29th Summer Universiade 2017 Taipei City - Chinese Taipei*:

- 11.2 Any protest of a sport or disciplinary nature must reach the Jury or other competent authority, by the Head of Delegation or his/her representative, according to the regulations laid down by the appropriate ISF.
- 11.3 Unless otherwise stated by the technical regulations of the sport concerned (cf. Art. 12), this protest must be submitted in writing and accompanied by a deposit of fifty Euros (50€) which will be returned if the protest is considered justified.
- 11.4 Any decision of the Jury of Appeal or equivalent authority of a sport is final and must be reported immediately to the Head of Delegation of the country concerned.

Any disciplinary situation, which cannot be satisfactorily resolved by the sports technical committees and the sport-specific disciplinary regulations, will be reported to the FISU Disciplinary Committee for further action to be taken.

Where appropriate, a report will also be sent to the ISF concerned.

6.11 Sport Equipment and Clothing

The equipment for the Gymnastics competition of the 29th Summer Universiade in Taipei 2017 will be provided by the Organizing Committee and approved by FISU and FIG.

Equipment	Model	Meeting
F.I.G. Rhythmic gymnastics floor	TQ1009	TaiShan

6.12 Doping Control

General Information

Doping Control during the Taipei 2017 Universiade will be strictly conducted by the Organizing Committee according to WADA and FISU regulations in order to ensure a fair competition and promote good sportsmanship.

Doping Control will begin from the opening date of the Athletes Village and last until the end of the Universiade. Participating athletes must abide by the relevant regulations and follow given guidelines when they have been selected and notified for testing. Any athlete who refuses to undergo testing, or interferes with the testing process, will be considered to have committed a doping violation and be subject to disciplinary action.

Doping Control Station (DCS)

Doping control stations are designed in accordance with WADA and FISU regulations. Samples for testing are collected in the Doping Control Station of each competition venue and can be collected at the Doping Control Center (Doping Control Station) located within the Athletes Village.

Athlete Selection

The FISU Medical Committee will select athletes for testing. Either rank in a competition will be taken into account, or random selection and target testing will be applied.

Accompanying Persons

Athletes may be accompanied by an additional person (coach, trainer, team doctor, etc.) and an interpreter if desired.

Reporting to Doping Control Station

The athlete must report to the doping control station in a reasonable amount of time from selection. The athlete will be allowed to attend ceremonies, press conference, etc., as long as they are accompanied by their chaperon.

Sample Collection

Athletes selected for testing will be notified immediately following the competition and will be under constant visual observation by a chaperon until they enter the Doping Control Station. At the station, sample (urine and/or blood) will be collected in a vessel, then sealed and submitted for transportation to the WADA approved laboratory under the supervision of a Doping Control Officer.

Athletes Obligation

The athlete must have their Accreditation with them at all times.
The athlete must report all medications taken in the prior month.
The athlete must present their TUE Document if he/she has one.

Testing Organization & Result

Collected samples will be analysed usually within 48 or 72 hours of collection at a WADA-accredited laboratory "Tokyo, Japan, Mitsubishi Chemical Medience", and results will be directly notified to the FISU Medical Chair. Athletes who test positive for banned drugs and fail the doping test may be subject to disqualification and disciplinary action.

Additional Controls Requested

A team may request for doping control tests to be performed on an athlete who has not been selected for doping control.

Examples of indications for this request are for National Records, or Target Testing. These athletes have to complete the "FISU Doping Control Request Form". They will then be escorted to the Doping Control Station. Costs for these tests will be the responsibility of the requesting organization. Results management for these tests will be the responsibility of FISU and the appropriate International Federation.

Price List for Anti-Doping Analyses of Urine and Blood Samples

Urine (standard)	NTD 42,000	10 working days upon sample receiving by laboratory for none AAF case
Urine (ESAs)	NTD 50,000	15 working days upon sample receiving by laboratory for none AAF case
Urine (hGHrf)	NTD 56,000	15 working days upon sample receiving by laboratory for none AAF case

Blood (hGH)	NTD 69,000	1. 15 working days upon sample receiving by laboratory for none AAF case 2. Application required on or before Chef de Mission for those delegation need hGH testing service
-------------	------------	--

- Payment Method: Payment to the Doping Control station (in the Athletes' Village polyclinic center) by cash only.

6.13 Awards and Medals

6.13.1 Medals

- 1) A gold medal, a silver medal and a bronze medal will be awarded.
- 2) The medalists will also receive mascots or bouquets on the podium.

6.13.2 Medal-Awarding Ceremony

- 1) The awarded athletes in each event must attend the Medal-Awarding Ceremony.
- 2) No national anthem will be played. Only the FISU anthem is played.
- 3) The medalists are not allowed to take any national flags or any other national, cultural or religious symbols on the podium. They should be bareheaded on the podium.
- 4) The medalists are expected to be in the medal awarding preparation and waiting area 30 minutes prior to the ceremony. In case of a no show of a medalist, the medals and mascots are delivered to an official of the relevant delegation. The official must not mount the podium but walk in front of it and take the medal and mascot in his/her hands.
- 5) Medalists are not required to attend the ceremony in the official team uniforms they wore at the Opening Ceremony. They are allowed to attend the official ceremony wearing sports uniforms or apparel depends on different kinds of events.
- 6) Medalists' authorities and accompanying persons are required to face the flags while they are being raised and the FISU anthem is being played.
- 7) Medalists have to remain at disposal of the press and if necessary of the medical staff after the Medal-Awarding Ceremony.

- 8) An official photograph must be taken before the medal winners depart from the zone of the ceremony.
- 9) The official languages for the Medal-Awarding Ceremonies will be Chinese and English.
- 10) Any dispute regarding protocol is resolved by the persons in charge of Protocol within FISU.

6.13.3 Diploma

- 1) The athletes ranked one (1) to eight (8) will receive a Diploma of Honor.
- 2) Diplomas of participation and of honor are not distributed to winners at the Medal-Awarding ceremony. They are handed to the Head of Delegation or an appointed representative of each delegation in the athlete village at a later time.

6.14 Press Interview

Venue Media Centers are set up in all competition venues to facilitate the interviews and reports by accredited media. After the competitions, all athletes must exit the field of play through the Mixed Zone, and brief interviews are conducted in the Mixed Zone, the interview time is limited to 5 minutes. Coaches and winning athletes/teams take part in press conferences after the Medal-Awarding Ceremonies on the request of the press manager. During the press conferences, interpretation will be provided in the official language (English) and Chinese.

Interview at Athletes Village

Only the media approved or invited by the delegation is allowed to enter Athletes' Village to interview athletes, and the interview place is limited to the media area of Athletes' Village.

6.15 Sport Information Services

Online Sport Information Services

- Internet address: <https://2017.taipei>

Sport Information Center

The Sport Information Center is located on the first floor of the international zone in the Athletes Village and provides the following information/services to delegations during the Taipei 2017 Summer Universiade:

- Distribution of Technical Handbooks
- Competition schedule
- Training schedule
- Technical meeting information
- Distribution of daily sport results
- Diploma of Honor

The Sport Information Center will be operated between 07:00 to 22:00 from August 12 to September 2, 2017.

Sport Information Desk

Sport Information Desks are located in all competition venues and will provide the delegations with sports information and general information.

The opening days of the SIDs will be subject to the competition schedules of the different sports. They will be operated from 1 hour before the competition starts to 1 hour after the competition.

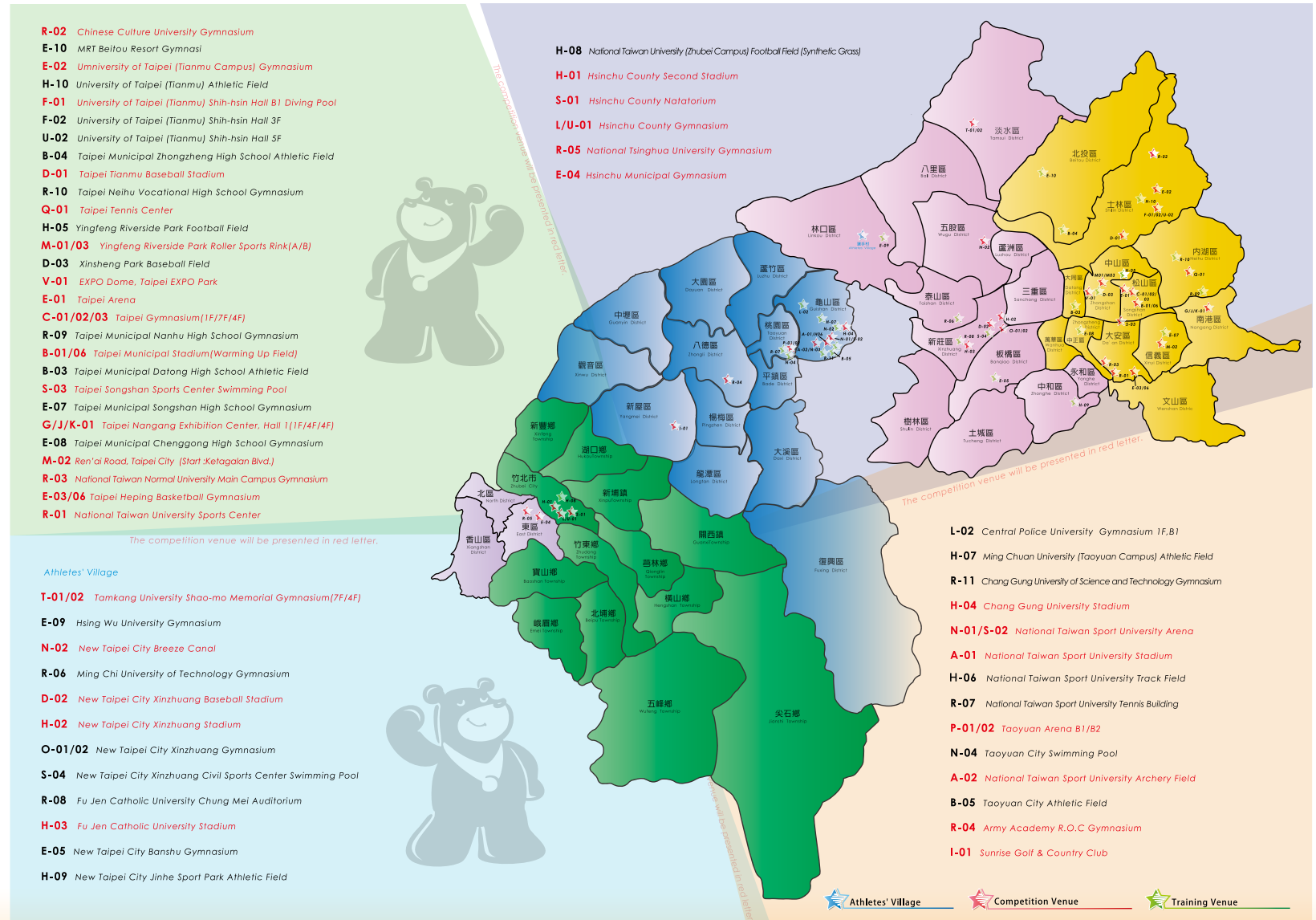
7. TRANSPORTATION SCHEDULE (DETAILED TIME RELATED TO THE COMPETITION)

7. TRANSPORTATION SCHEDULE (DETAILED TIME RELATED TO THE COMPETITION)

The shuttle bus timetable flyers of each individual sport will be distributed in Sport Information Center.

8. MAPS

8. MAPS



9. APPENDICES

9 APPENDICES

Appendix 1. General Competition Schedule

		Fri	Sat	Sun	Mon	Tue	Wed	Thu	Fri	Sat	Sun	Mon	Tue	Wed	Competition Days	Competition Date
		Aug. 18	Aug. 19	Aug. 20	Aug. 21	Aug. 22	Aug. 23	Aug. 24	Aug. 25	Aug. 26	Aug. 27	Aug. 28	Aug. 29	Aug. 30		
		Day0	Day1	Day2	Day3	Day4	Day5	Day6	Day7	Day8	Day9	Day10	Day11	Day12		
	Opening Ceremony		★													
1	Archery						5	5							5	8/20-8/24
2	Athletics						2	6	9	12	11	10			6	8/23-8/28
3	Badminton								1				5		6	8/23-8/29
4	Baseball												1		8	8/20-8/29
5	Basketball											1	1		10	8/20-8/29
6	Diving			2	2	1	1	3	1	1	4				8	8/20-8/27
7	Fencing			2	2	2	2	2	2						6	8/20-8/25
8	Football											1	1		12	8/18-8/29
9	Golf										4				4	8/24-8/27
10	Artistic Gymnastics			1	1	2	10								5	8/19-8/23
11	Rhythmic Gymnastics											2	6		3	8/27-8/29
12	Judo			4	4	4	4	2							5	8/20-8/24
13	Roller Sports				4	4	4		2	2					5	8/21-8/26
14	Swimming			4	5	5	7	4	7	8	2				8	8/20-8/27
15	Table Tennis									2	1	2	2		8	8/22-8/29
16	Taekwondo			2	3	4	4	4	4	2					7	8/20-8/26
17	Tennis											2	5		9	8/21-8/29
18	Volleyball											1	1		10	8/20-8/29
19	Water Polo												1	1	13	8/18-8/30
20	Weightlifting			3	3	2	2	3	3						6	8/20-8/25
21	Wushu										2	2	10		4	8/26-8/29
	Closing Ceremony													★		
	Total			18	24	24	41	29	29	27	24	21	33	1	271	
	Demonstration															
	Billiards										2		2		5	8/25-8/29
	Total												4		4	