

FÉDÉRATION INTERNATIONALE DE GYMNASTIQUE



46TH FIG ARTISTIC GYMNASTICS WORLD CHAMPIONSHIPS

GLASGOW (GBR)

23 October – 1 November, 2015



**2015 WORLD GYMNASTICS
CHAMPIONSHIPS**

GLASGOW 23 OCT-01 NOV



Directives

Dear President,

The FIG is pleased to herein provide you with the Directives for the 46th FIG Artistic Gymnastics World Championships to be held in Glasgow (GBR) from 23 October – 1 November 2015.

These World Championships will be organized following the 2015 FIG Statutes, 2015 FIG Technical Regulations (TR), MAG Code of Points 2013-2016 Feb. 2013 (including NSL#27, NSL#28 and #29), WAG Code of Points 2013-2016 Nov. 2014, and other Rules, Regulations and Guidelines valid starting 1 January 2015, onwards, any possible amendments by the date of these World Championships, and any complements decided in the meantime.

All participating Federations commit to abide by the Statutes and all FIG Rules and Regulations. Federations failing to respect them will not be allowed to participate.

Table of contents

1. FEDERATION INTERNATIONALE DE GYMNASTIQUE (FIG).....	3
2. LOCAL ORGANIZING COMMITTEE (LOC).....	3
3. LOCATION OF THE COMPETITION, TRAINING AND WARM-UP HALLS.....	3
4. PROVISIONAL PROGRAM (SUBJECT TO CHANGES).....	5
5. PARTICIPATION RIGHT AND ACCREDITATIONS.....	9
6. AGE LIMIT OF GYMNASTS.....	12
7. REGISTRATIONS AND ENTRY FEES.....	12
8. LICENSES.....	14
9. JUDGES.....	15
10. DRAWING OF LOTS.....	15
11. COMPETITIONS FORMAT AND PROGRAMME.....	15
12. BIOGRAPHIES.....	16
13. PUBLICITY.....	16
14. EQUIPMENT.....	16
15. VISA.....	17
16. TRANSPORTATION.....	17
17. ACCOMMODATION.....	18
18. MEALS.....	25
19. INSURANCE.....	27
20. WORKPLAN.....	27
21. DOPING CONTROLS.....	27
22. OFFICIAL HOSPITAL.....	27
23. WAG MUSIC.....	27
24. WORKSHOP	28
25. SUMMARY OF THE DEADLINES AND PAYMENTS.....	28
APPENDICES.....	29

1. FEDERATION INTERNATIONALE DE GYMNASTIQUE (FIG)

Fédération Internationale de Gymnastique
Contact Persons: Terhi Toivanen (MAG) Céline Cachemaille (WAG)
Avenue de la Gare 12
Case Postale 630
CH - 1001 Lausanne
Tel : +41 (0)21 321 55 10
Direct : +41 (0)21 321 55 33 (T. Toivanen) / +41 (0)21 321 55 14 (C. Cachemaille)
Fax : +41 (0)21 321 55 19/29
Email : ttoivanen@fig-gymnastics.org / ccachemaille@fig-gymnastics.org
Website : <http://www.fig-gymnastics.com>

2. LOCAL ORGANIZING COMMITTEE (LOC)

BRITISH GYMNASTICS
Ford Hall
Lilleshall Nat. Sports Centre
NR NEWPORT SHROPS. TF10 9NB
Great Britain
Tel : +44 345 1297 129
Email: information@british-gymnastics.org
Website: www.british-gymnastics.org

LOCAL ORGANIZING COMMITTEE OFFICE
1000 London Road
Glasgow
G40 3HY
Great Britain
Tel: +44 141 302 2853
Email: Delegations@2015worldgymnastics.com
Website: www.2015worldgymnastics.com

All correspondence to be directed to the LOC Office for the attention of: Jill Elborn, Delegation Services Manager

3. LOCATION OF THE COMPETITION, TRAINING, AND WARM-UP HALLS

Competition Hall	The SSE Hydro, SECC Glasgow, G3 8YW, Scotland, UK Email: info@secc.co.uk Website: http://www.thessehydro.com Hall Capacity: 7'000 seats
Warm-up Hall	SECC Glasgow, G3 8YW, Scotland, UK <u>SECC Hall 5</u> <u>MAG</u> : equipped with one full set of apparatus and additional PH, PB and HB <u>WAG</u> : equipped with one full set of apparatus and additional UB and BB An additional general stretching area will be provided in the Warm-up Hall
Training Halls	SECC Glasgow, G3 8YW, Scotland, UK <u>SECC Hall 2</u> <u>WAG Hall C</u> : equipped with 1 full set of apparatus and additional UB and BB <u>SECC Hall 3</u> <u>MAG Hall A</u> : equipped with 1 full set of apparatus and additional PH and PB <u>MAG Hall B</u> : equipped with 1 full set of apparatus and additional PH and PB <u>WAG Hall A</u> : equipped with 1 full set of apparatus and additional UB and BB <u>WAG Hall B</u> : equipped with 1 full set of apparatus and additional UB and BB An additional general stretching area will be provided in each Training Hall

Pictures of the Halls

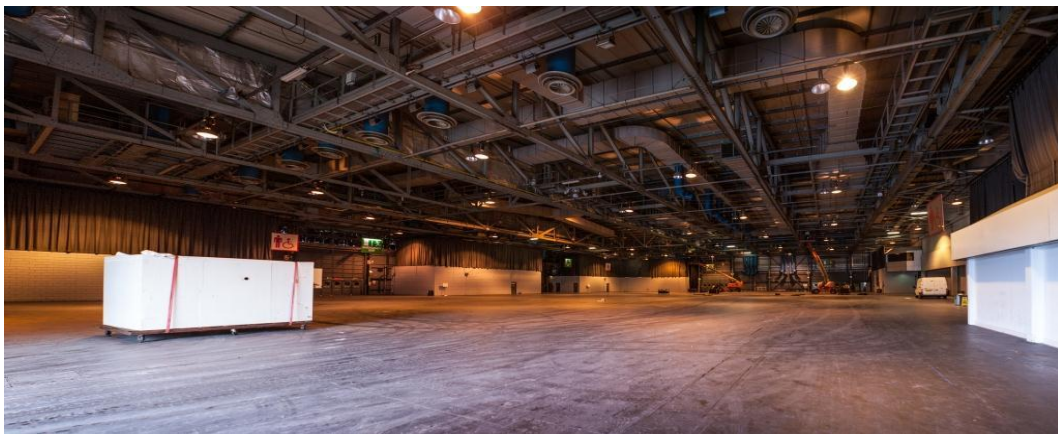
**Competition Hall
The SSE Hydro Outside**



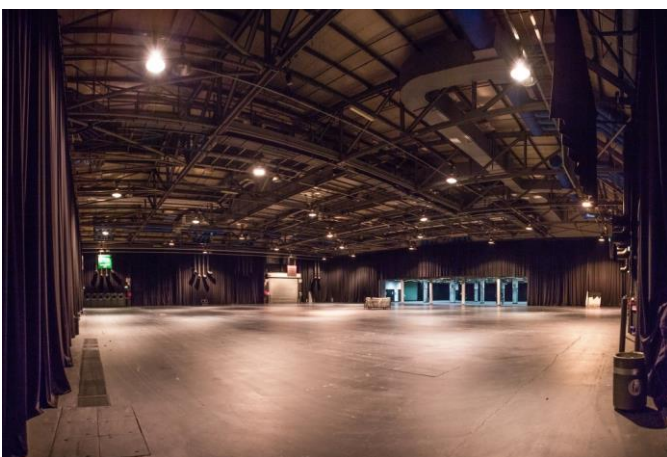
The SSE Hydro Inside



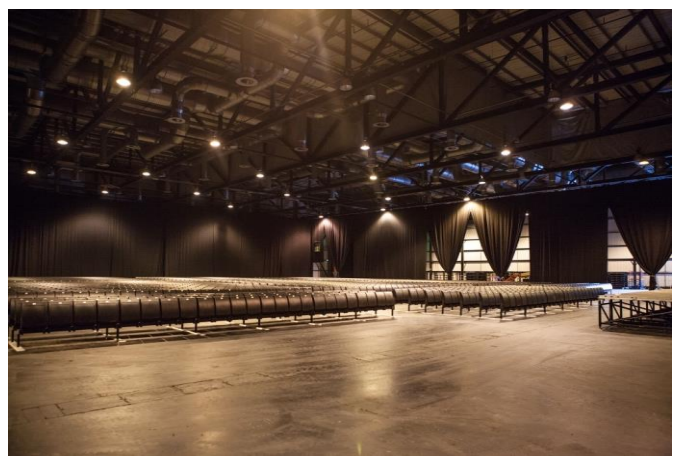
Warm up Hall 5



**Training Hall
Hall 2**



**Training Hall
Hall 3**



4. PROVISIONAL PROGRAM (SUBJECT TO CHANGES)

DATE / TIME	DESCRIPTION	LOCATION
Thu. Oct. 15 As Announced As Needed	Arrival of the WTC Meeting FIG staff-LOC Staff	As Announced FIG Room
Fri. Oct. 16 As Announced As Needed 10h00-18h00	Arrival of the D-WAG Judges Meeting FIG staff-LOC Staff WTC Meeting	As Announced FIG Room WTC Room (Carron Suite 2)
Sat. Oct. 17 As Announced As announced As Needed As per Schedule 12h00-15h00 15h30-18h00	Official Arrival of the Delegations Arrival of the MTC Meeting FIG staff-LOC Staff Apparatus Control (MAG and WAG) WTC Meeting Meeting with D-WAG Judges	As Announced As Announced FIG Room Relevant Halls WTC Room (Carron Suite 2) WAG Judges' Room (Alsh Suite)
Sun. Oct. 18 As Announced As per Schedule As Needed As per Schedule 10h00-11h00 10h00-18h00 11h00-14h00 14h00-18h00 20h00-21h00	Arrival of the D-MAG Judges MAG and WAG Trainings Meeting FIG staff-LOC Staff Apparatus Control (MAG and WAG) WTC Meeting MTC Meeting WAG Judges' Instruction and draw for C-I and C-II LOC Rehearsals Orientation Meeting	As Announced Training Halls FIG Room Relevant Halls WTC Room (Carron Suite 2) MTC Room (Carron Suite 1) WAG Judges' Room (Alsh Suite) FOP Lomond Suite (adjacent to Press Ctre)
Mon. Oct. 19 As per Schedule As per Schedule As per Schedule As Needed As per Schedule 09h00-12h00 09h10-09h25 14h00-18h00	MAG and WAG Trainings WAG Warm-up WAG Podium Trainings (Day 1) Meeting FIG staff-LOC Staff Apparatus Control (MAG and WAG) MTC Meeting WAG Judges' Roll Call Meeting with D-MAG Judges	Training Halls Warm-up Hall FOP FIG Room Relevant Halls MTC Room (Carron Suite 1) WAG Judges' Room (Alsh Suite) MAG Judges' Room (Boisdale Suite)
Tue. Oct. 20 As per Schedule As per Schedule As per Schedule As Needed As per Schedule End 6 th Podium Sub 09h00-10h00 09h30-09h50 10h00-15h00	MAG and WAG Trainings WAG Warm-up WAG Podium Trainings (Day 2) Meeting FIG staff-LOC Staff Apparatus Control (MAG and WAG) Longines' Briefing for all WAG Judges MTC Meeting WAG Judges' Roll Call MAG Judges' Instruction and draw for C-I, CIV and C-II	Training Halls Warm-up Hall FOP FIG Room Relevant Halls FOP MTC Room (Carron Suite 1) WAG Judges' Room (Alsh Suite) MAG Judges' Room (Boisdale Suite)

DATE / TIME	DESCRIPTION	LOCATION
Wed. Oct. 21 As per Schedule As per Schedule As per Schedule As Needed As per Schedule As Needed (TBC) 08h45-09h25	MAG and WAG Trainings MAG Warm-up MAG Podium Trainings (Day 1) Meeting FIG staff-LOC Staff Apparatus Control (MAG and WAG) WTC Meeting (TBC) MAG Judges' Briefing	Training Halls Warm-up Hall FOP FIG Room Relevant Halls WTC Room (Carron Suite 2) MAG Judges' Room (Boisdale Suite)
Thu. Oct. 22 As per Schedule As per Schedule As per Schedule As Needed As per Schedule As Needed (TBC) End 5 th Podium Sub 08h45-09h25 12h30-13h00 15h15-16h30 19h30-21h00	Thursday MAG and WAG Trainings MAG Warm-up MAG Podium Trainings (Day 2) Meeting FIG staff-LOC Staff Apparatus Control (MAG and WAG) WTC Meeting (TBC) Longines' Briefing for all MAG Judges MAG Judges' Briefing Opening Press Conference Media Welcome Reception Heads of Delegation Welcome Reception	Training Halls Warm-up Hall FOP FIG Room Relevant Halls WTC Room (Carron Suite 2) FOP MAG Judges' Room (Boisdale Suite) Lomond Suite (adjacent to Press Ctre) TBC TBC
Fri. Oct. 23 As per Schedule As Needed As per Schedule As Needed (TBC) As per Schedule As per Schedule 08h45-09h25 09h40-10h00 10h00- 12h15- 15h00- 17h15- 20h00-	MAG and WAG Trainings Meeting FIG staff-LOC Staff Apparatus Control (MAG and WAG) MTC Meeting (TBC) WAG Warm-up WAG Qualifying Competitions (Day 1) WAG Judges' Briefing Opening Ceremony (Oaths and Speeches) Subdivision 1 (morning session) Subdivision 2 (morning session) Subdivision 3 (afternoon session) Subdivision 4 (afternoon session) Subdivision 5 (afternoon session)	Training Halls FIG Room Relevant Halls MTC Room (Carron Suite 1) Warm-up Hall FOP WAG Judges' Room (Alsh Suite) FOP FOP FOP FOP FOP FOP
Sat. Oct. 24 As per Schedule As Needed As per Schedule As Needed (TBC) As per Schedule As per Schedule 09h00-09h25 10h00- 12h15- 15h00- 17h15- 20h00-	MAG and WAG Trainings Meeting FIG staff-LOC Staff Apparatus Control (MAG and WAG) MTC Meeting (TBC) WAG Warm-up WAG Qualifying Competitions (Day 2) WAG Judges' Briefing Subdivision 6 (morning session) Subdivision 7 (morning session) Subdivision 8 (afternoon session) Subdivision 9 (afternoon session) Subdivision 10 (afternoon session)	Training Halls FIG Room Relevant Halls MTC Room (Carron Suite 1) Warm-up Hall FOP WAG Judges' Room (Alsh Suite) FOP FOP FOP FOP FOP

DATE / TIME	DESCRIPTION	LOCATION
Sun. Oct. 25 As per Schedule As Needed As per Schedule As per Schedule 11h00-18h00 As per Schedule 08h45-09h25 10h00- 13h00- 16h30- 19h30-	WAG Trainings (Finalists) / MAG Trainings Meeting FIG staff-LOC Staff Apparatus Control (MAG and WAG) MAG Warm-up WTC Meeting and Judges' analysis of WAG CI MAG Qualifying Competitions (Day 1) MAG Judges' Briefing Subdivision 1 (morning session) Subdivision 2 (morning session) Subdivision 3 (afternoon session) Subdivision 4 (afternoon session)	Training Halls FIG Room Relevant Halls Warm-up Hall WTC Room (Carron Suite 2) FOP MAG Judges' Room (Boisdale Suite) FOP FOP FOP FOP
Mon. Oct. 26 As per Schedule As Needed As per Schedule As per Schedule 11h00-18h00 As per Schedule 08h45-09h25 10h00- 13h00- 16h30- 19h30-	WAG Trainings (Finalists) / MAG Trainings Meeting FIG staff-LOC Staff Apparatus Control (MAG and WAG) MAG Warm-up WTC Meeting and Judges' analysis of WAG CI (if needed) MAG Qualifying Competitions (Day 2) MAG Judges' Briefing Subdivision 5 (morning session) Subdivision 6 (morning session) Subdivision 7 (afternoon session) Subdivision 8 (afternoon session)	Training Halls FIG Room Relevant Halls Warm-up Hall WTC Room (Carron Suite 2) FOP MAG Judges' Room (Boisdale Suite) FOP FOP FOP FOP
Tue. Oct. 27 As per Schedule As Needed As per Schedule As per Schedule 10h00-18h00 13h00-16h00 17h15-18h00 18h15-18h45 18h45- Immed. after end Compet Immed. after Awa. Cere	MAG and WAG Trainings (Finalists) Meeting FIG staff-LOC Staff Apparatus Control (MAG and WAG) WAG Warm-up (Finalists) MTC Meeting and Judges' analysis of MAG CI LOC Rehearsals WAG Judges' Briefing and Draw for CIV and CIII Finals Opening Ceremony (Cultural Segment) WAG Teams Finals Award Ceremony WAG Teams Final Medalists' Press Conference	Training Halls FIG Room Relevant Halls Warm-up Hall MTC Room (Carron Suite 1) FOP WAG Judges' Room (Alsh Suite) FOP FOP FOP Lomond Suite (adjacent to Press Ctre)
Wed. Oct. 28 As per Schedule As Needed As per Schedule As per Schedule 13h00-as needed 16h30-17h15 18h00- Immed. after end Compet Immed. after Awa. Cere	MAG and WAG Trainings (Finalists) Meeting FIG staff-LOC Staff Apparatus Control (MAG and WAG) MAG Warm-up (Finalists) WTC Meeting and Judges' analysis of WAG CIV MAG Judges' Briefing MAG Teams Finals Award Ceremony MAG Teams Final Medalists' Press Conference	Training Halls FIG Room Relevant Halls Warm-up Hall WTC Room (Carron Suite 2) MAG Judges' Room (Boisdale Suite) FOP FOP Lomond Suite (adjacent to Press Ctre)

DATE / TIME	DESCRIPTION	LOCATION
Thu. Oct. 29 As per Schedule As Needed As per Schedule As per Schedule 09h00-12h00 (TBC) 10h00-14h00 14h30-17h30 (TBC) 16h30-18h00 18h00-18h30 19h00- Immed. after end Compet Immed. after Awa. Cere	MAG and WAG Trainings (Finalists) Meeting FIG staff-LOC Staff Apparatus Control (MAG and WAG) WAG Warm-up (Finalists) MAG Workshop (TBC) MTC Meeting and Judges' analysis of MAG CIV MAG Workshop (Repetition) (TBC) WAG Athletes' Meeting WAG Judges' Briefing WAG All-Around Finals Award Ceremony WAG All Round Final Medalists' Press Conference	Training Halls FIG Room Relevant Halls Warm-up Hall MAG Judges' Room (Boisdale Suite) MTC Room (Carron Suite 1) MAG Judges' Room (Boisdale Suite) Morar Suite WAG Judges' Room (Alsh Suite) FOP FOP Lomond Suite (adjacent to Press Ctre)
Fri. Oct. 30 As per Schedule As Needed As per Schedule As per Schedule 13h00-as needed 15h30-17h00 16h45-17h30 18h15- Immed. after end Compet Immed. after Long. Prize Immed. after Awa. Cere	MAG and WAG Trainings (Finalists) Meeting FIG staff-LOC Staff Apparatus Control (MAG and WAG) MAG Warm-up (Finalists) WTC Meeting and Judges' analysis of WAG CII MAG Athletes' Meeting MAG Judges' Briefing MAG All-Around Finals Longines Prize for Elegance Award Ceremony MAG All Round Final Medalists' Press Conference	Training Halls FIG Room Relevant Halls Warm-up Hall WTC Room (Carron Suite 2) Morar Suite MAG Judges' Room (Boisdale Suite) FOP FOP FOP Lomond Suite (adjacent to Press Ctre)
Sat. Oct. 31 As per Schedule As Needed As per Schedule As per Schedule 09h00-10h45 11h15-12h45 11h30-12h30 13h00-13h30 13h30- 13h30- Immed. after MAG FX Immed. after WAG VT Immed. after Awa. Cere Immed. after MAG PH Immed. after WAG UB Immed. after MAG SR Immed. after Awa. Cere Immed. after Awa. Cere	MAG and WAG Trainings (Finalists) Meeting FIG staff-LOC Staff Apparatus Control (MAG and WAG) MAG and WAG Warm-up (Finalists) MTC Meeting and Judges' analysis of MAG CII MAG Judges' Briefing and Draw for CIII (FX, PH, SR) MAG and WAG Warm-up FOP (Finalists) WAG Judges' Briefing Individual Apparatus Finals (Day 1) MAG Floor Exercise WAG Vault Award Ceremonies MAG FX / WAG VT MAG Pommel Horse WAG Uneven Bars MAG Rings Award Ceremonies MAG PH / WAG UB / MAG RG Medalists' Press Conference WTC Meeting and Judges' analysis of WAG CIII (VT/UB)	Training Halls FIG Room Relevant Halls Warm-up Hall MTC Room (Carron Suite 1) MAG Judges' Room (Boisdale Suite) FOP WAG Judges' Room (Alsh Suite) FOP FOP FOP FOP FOP FOP FOP FOP Lomond Suite (adjacent to Press Ctre) WTC Room (Carron Suite 2)

DATE / TIME	DESCRIPTION	LOCATION
Sun. Nov. 1		
As per Schedule	MAG and WAG Trainings (Finalists)	Training Halls
As Needed	Meeting FIG staff-LOC Staff	FIG Room
As per Schedule	Apparatus Control (MAG and WAG)	Relevant Halls
As per Schedule	MAG and WAG Warm-up (Finalists)	Warm-up Hall
10h00-11h30 (TBC)	Medical and Anti-doping meeting (TBC)	Morar Suite
11h00-12h30	WTC Meeting and Judges' analysis of WAG CIII (VT, UB)	WTC Room (Carron Suite 2)
11h15-12h45	MAG Judges' Briefing and Draw for CIII (VT, PB, HB)	MAG Judges' Room (Boisdale Suite)
11h30-12h30	MAG and WAG Warm-up FOP (Finalists)	FOP
13h00-13h30	WAG Judges' Briefing	WAG Judges' Room (Alsh Suite)
13h30	Individual Apparatus Finals (Day 2)	FOP
13h30–	MAG Vault	FOP
Immed. after MAG VT	WAG Balance Beam	FOP
Immed. after WAG BB	Award Ceremonies MAG VT / WAG BB	FOP
Immed. after Awa. Cere	MAG Parallel Bars	FOP
Immed. after MAG PB	WAG Floor Exercise	FOP
Immed. after WAG FX	MAG Horizontal Bar	FOP
Immed. after MAG HB	Award Ceremonies MAG PB / WAG FX / MAG HB	FOP
Immed. after Awa. Cere	Closing Ceremony	FOP
Immed. after Clos. Cere	Medalists' Press Conference	Lomond Suite (adjacent to Press Ctre)
Immed. after Clos. Cere	WTC Meeting and Judges' analysis of WAG CIII (BB/FX)	WTC Room (Carron Suite 2)
19h00-23h00	Farewell Banquet	Glasgow Science Center
Mon. Nov. 2		
As Announced	Official Departure of the Delegations, and Judges	As Announced
13h00-18h00	MTC Meeting	MTC Room (Carron Suite 1)
As Needed	WTC Meeting	WTC Room (Carron Suite 2)
Tue. Nov. 3		
As Announced	Official MTC and WTC Departures	As Announced

5. PARTICIPATION RIGHT AND ACCREDITATIONS

Senior Gymnasts holding a valid FIG License until the end of the competitions and with the correct age from FIG affiliated federations in good standings may take part in these World Championships. The top 24 teams from the 2014 FIG ART World Championships in Nanning will be invited as follows:

MAG	CHN, JPN, USA, GBR, RUS, GER, BRA, SUI, UKR, KOR, FRA, ROU, ITA, CAN, BLR, ESP, COL, NED, BEL, HUN, PUR, GRE, MEX, TPE
WAG	USA, CHN, RUS, GBR, ITA, JPN, ROU, AUS, GER, NED, BEL, CAN, FRA, MEX, ESP, BRA, POL, KOR, SUI, HUN, SWE, AUT, PRK, GRE

Delegations with full MAG and/or WAG teams are entitled to include one MAG reserve gymnast and/or one WAG reserve gymnast. All other federations have a limited participation with a maximum of 3 Individual gymnasts. An individual is entitled to only one accreditation card. If an individual has several valid "accreditable" functions, the highest function is normally selected, and no substitutes may directly benefit from unused accreditations. The functions of judge and gymnast cannot be combined with any other function, except for gymnast who can also act as Head of Delegation.

Maximum Delegation Size

The maximum size of each delegation, together with the number of transferable access cards (transferable within the Federation's official delegation and for the appropriate function) as per FIG Rules for Accreditation is as follows:

Function	MAG	WAG	Mixed
Officials (regardless if participation with full teams or individual gymnasts)			
Head of Delegation	1	1	1
Medical Doctor	1	1	2
Paramedical Staff	1	1	2
Full Teams (for delegations with 4 to 6 gymnasts)			
Gymnasts	6	6	12
Reserve Gymnasts	1	1	2
Team Manager	1	1	2
Coach	3	3	6
Additional Coaches (the total number of coaches and additional coaches per discipline may not exceed the total number of gymnasts)*	3	3	
Judge	2	2	4
Additional Paramedical Staff *	1	1	2
Guest or VIP Guest*	1	1	2
Individual Gymnasts (for delegations with 1 to 3 gymnasts)			
Gymnasts	3	3	6
Coach (max. 1 coach per gymnast)	2	2	4
Additional Coach (the total number of coaches and additional coaches per discipline may not exceed the total number of gymnasts)*	1	1	
Judges	1	1	2
Guest or VIP Guest*	1	1	2
Transferable Access Cards to be used in conjunction with the primary accreditation card (the total number of transferable access cards for coaches may not exceed the total number of coaches per discipline)			
Zone 1 for coach	2	2	4
Zone 3 for coach	3	3	6
Zone 1 for medical staff	1	1	1
Zone 3 for medical staff (for delegations with 1 to 3 gymnasts)	1	1	1
Zone 3 for medical staff (for delegations with 4 to 6 gymnasts)	2	2	2
Zone 3 for MAG/WAG Team Manager (if any) or Head of Delegation	1	1	1

Additional transferable access cards may be delivered by FIG upon request by the delegation due to competition schedule / conditions. *Accreditations with a star (*) are at the charge of the Delegations. The costs of these accreditations are as follows:

Additional Coach	£150
Additional Paramedical Staff	£150
Guest (if accommodation booked through the LOC: access to the delegations seating, local transportation and banquet)	£150
Guest (if accommodation not booked through the LOC: access to the delegations seating only)	£150
VIP Guest (if accommodation booked through the LOC: access to the delegations seating, VIP seating, VIP Lounge, local transportation and banquet)	£300
VIP Guest (if accommodation not booked through the LOC: access to the delegations seating, VIP seating and VIP Lounge only)	£300

Supplementary Accreditations

The following supplementary Accreditations (either free of charge or at the charge of the Delegations or the FIG Authorities) as per the accreditation rules may also be delivered to the FIG affiliated federations and FIG Authorities, provided that a request is sent in writing to the FIG not later than **27 July 2015**.

FIG and former FIT and IFSA Honorary Members	Free
Former Olympic and World Champions	Free
Council Member	Free
NF President as Guest if not as Head of Delegation (if accommodation booked through the LOC: access to the delegations seating, local transportation and banquet)	£150
NF President as Guest if not as Head of Delegation (if accommodation not booked through the LOC: access to the delegations seating only)	£150
NF President as VIP Guest if not as Head of Delegation (if accommodation booked through the LOC: access to the delegations seating, VIP seating, VIP Lounge, local transportation and banquet)	£300
NF President as VIP Guest if not as Head of Delegation (if accommodation not booked through the LOC: access to the delegations seating, VIP seating and VIP Lounge only)	£300
Accompanying Person of an NF President (either as Guest or Head of Delegation)	£150
VIP Accompanying Person of an NF President (either as Guest or Head of Delegation)	£300
VIP Accompanying Person of TC Members	£300
VIP Accompanying Person of EC Members (including TC Presidents)	Free
VIP Accompanying Person of FIG and former FIT and IFSA Honorary Members	Free
Organizers of future ART multi sports Games, World and Continental Championships (if assigned or if candidature/bidding file received) other than the next ART World Championships	
Observers (if accommodation booked through the LOC: access to the delegations seating, local transportation and banquet)	£150
Observers (if accommodation not booked through the LOC: access to the delegations seating only)	£150
VIP Observers (if accommodation booked through the LOC: access to the delegations seating, VIP seating, VIP Lounge, local transportation and banquet)	£300
VIP Observers (if accommodation not booked through the LOC: access to the delegations seating, VIP seating and VIP Lounge only)	£300
Organizers of the next ART World Championship - Maximum 6 accreditations including 2 VIP	
Observers (if accommodation booked through the LOC: access to the delegations seating, local transportation and banquet)	Free
Observers (if accommodation not booked through the LOC: access to the delegations seating only)	Free
VIP Observers (if accommodation booked through the LOC: access to the delegations seating, VIP seating, VIP Lounge, local transportation and banquet)	Free
VIP Observers (if accommodation not booked through the LOC: access to the delegations seating, VIP seating and VIP Lounge only)	Free

Additional Observers	
Additional Observers (if accommodation booked through the LOC: access to the delegations seating, local transportation and banquet)	£150
Additional Observers (if accommodation not booked through the LOC: access to the delegations seating only)	£150
Additional VIP Observers (if accommodation booked through the LOC: access to the delegations seating, VIP seating, VIP Lounge, local transportation and banquet).	£300
Additional VIP Observers (if accommodation not booked through the LOC: access to the delegations seating, VIP seating and VIP Lounge only)	£300

PAYMENT

The payment for all these accreditations (at the charge of the Delegations or the FIG Authorities) must be made exclusively to the LOC via bank transfer by **27 July 2015** at the very latest as follows:

Beneficiary	Culture and Sport Glasgow
Account	83 44 00
Bank	00678850
IBAN	GB26 RBOS8344 0000 6788 50
SWIFT/BIC	RBOS GB 2L

All bank fees in connection with the bank transfers must be covered. Please state the name of your federation (or the FIG Authority), the contact person and the payment purpose on the transfer (i.e "SUI_John Smith_2015 ART WCH Accreditations"). The payment must be made in **GBP only**.

In case of lost or stolen accreditation, the LOC and the FIG must be informed immediately to block the accreditation. Lost or stolen accreditations may be replaced at the charge of the card holder CHF 200. Lost or stolen transferable access cards will not be replaced.

Media Accreditations

Media representatives as well as federations' communications staff who are interested in covering the event can register online at <https://media.fig-gymnastics.com>. In addition, federations are requested to send a confirmation letter for their editorial staff and photographers to the FIG Media Department at mediafig@fig-gymnastics.org.

The FIG Accreditation Rules and Media Rules have to be strictly respected.

6. AGE LIMIT OF GYMNASTS.

- The age of the **MAG gymnasts** in 2015 is minimum 18 years old (born 1997) or older.
- The age of the **WAG gymnasts** in 2015 is minimum 16 years old (born 1999) or older.

7. REGISTRATIONS AND ENTRY FEES

Registrations can only be made by FIG affiliated federations in good standings.



Important Notes

- Subject to FIG Council decision in Melbourne (AUS) in May 2015, each NF taking part entering a team will have the right to present two qualified E-judges in good standing, provided that no R-judge was nominated or D-judge was drawn:
 - If 1 R is nominated, then only 1 E can be assigned
 - If 1 D is drawn, then only 1 E can be assigned
 - If 1 R is nominated and 1 D is drawn, then no E can be assigned
- Subject to FIG Council decision in Melbourne (AUS) in May 2015, each Federation entering individuals will have the right to present one qualified E-judge, regardless if R-judge was nominated or D-judge was drawn. The total number of D, R, or E judges per NF may however not exceed 2.
- Should a Delegation with a team of 6 gymnasts enter 1 reserve athlete, then “7” must be registered under the gymnast number

Provisional Registration

The provisional registrations must be completed by entering the composition of the delegation via the **FIG** on-line system (click [here](#)) and by using the National Gymnastics Federations' login (e-mail) and password, **from now until 26 May 2015 (until midnight Swiss Time)** at the very latest.

Definitive Registration

The definitive registration must be completed by entering the composition of the delegation via the **FIG** on-line system (click [here](#)) and by using the National Gymnastics Federations' login (e-mail) and password, **from 27 May 2015 until 27 July 2015 (until midnight Swiss Time)** at the very latest.

Definitive registrations received in the FIG Offices after the drawing of lots will be refused (i.e. the gymnasts will not be allowed to compete).

Nominative Registration

The nominative registrations must be completed by entering the composition of the delegation via the **FIG** on-line system (click [here](#)) and by using the National Gymnastics Federations' login (e-mail) and password, **from 28 July 2015 until 23 September 2015 (until midnight Swiss Time)** at the very latest.

Together with the nominative registration, the delegations must upload to the **LOC** Championships Portal one passport photo of each delegation member and complete the accreditation application (Appendix 4). The specifications of each photo must be as follows:

- File format: jpeg
- Dimensions: min. 210 X 270 pixels, max. 420 X 540 pixels
- Width 35 x 45 height
- File size: not bigger than 1MB

Member Federations unique user name and password to access the **LOC** Championships Portal (Appendix 4) will be emailed to the Member Federations key contact as provided by the FIG.

Entry Fees

The **non-reimbursable** registration fees are:

- CHF 200.- **per team** (i.e. for participation with 4 to 6 gymnasts plus one reserve)
- CHF 50.- **per individual gymnast** (for participation with 1, 2, or 3 individual gymnasts)

The total amount must be paid to FIG by **27 July 2015** by using one of the following payment methods:

1. Bank wire:

Beneficiary	Fédération Internationale de Gymnastique Av. de la Gare 12, CH-1003 Lausanne/Switzerland
Account	272-56301649.0
Bank	UBS SA, Nidaugasse 49, CH-2501 Bienne/Switzerland
IBAN	CH40 0027 2272 5630 1649 0
SWIFT/BIC	UBSWCHZH80A

All bank fees in connection with the bank transfers must be covered. Please state the name of the federation, the contact person and the payment purpose on the transfer (i.e. "SUI_John Smith_2015 ART WCH Registration Fees"). The payment must be made in **CHF only**.

2. Credit card:

For payment by credit card, please contact directly the FIG Finance Manager, Mr Jürgen KOLB (jkolb@fig-gymnastics.org).

Registrations without the appropriate payment of the registration fees at the time of the Definitive Registration will be considered invalid (i.e. the gymnasts will not be allowed to compete).

Federations which have not fulfilled their financial obligations towards the FIG (e.g. annual membership fees, unpaid invoices etc.) and the LOC (e.g. hotel accommodation) will not be allowed to participate in these World Championships.

Fines

The fines are as follows (as per FIG TR, Section 1, Reg. 4.1.):

Fine after missing the Provisional Registration deadline or after late Provisional Registration	CHF 1'000
Fine after missing the Definitive Registration deadline or after late Definitive Registration (until the gymnast's drawing of lots)	CHF 1'500
Fine after missing the Nominative Registration deadline or after late Nominative Registration	CHF 1'000
Fine for not participating with a team or for participating with individual gymnasts only after the Definitive Registration has been made with a team (as per the Technical Regulations):	CHF 1'000

8. LICENSES

The LOC will be responsible for checking the validity of the gymnasts' Licenses. **No gymnasts will be accepted without a valid FIG License at the deadline of the Nominative Registration.** In order to be considered, Licence application forms (new or renewal) **must** be submitted **at least one (1) month prior to the deadline for nominative registration.** Please consult FIG License Rules (Appendix 2) for additional information in this respect.

9. JUDGES

The MAG and WAG D1, D2 and R Judges will be designated by FIG. Each Delegation may send up MAG and WAG Judges of Category I, II, III. The MAG and WAG E-judges' draw in Glasgow will be conducted in accordance with the provisions of the 2013 FIG General Judges' Rules, including Reg. 7.10.3 a) of the 2015 TR.

The Jury of Appeal will be composed as follows:

Discipline	President	Member	Member
MAG	Wolfgang Willam	Koji Takizawa	To be named on site if required
WAG	Slava Corn	Peter Vidmar	To be named on site if required

10. DRAWING OF LOTS

The drawing of lots will decide the starting order of the qualifying competitions and the Apparatus finals. The gymnasts' drawing of lots will take place within two weeks after the deadline of the Definitive Registration. The exact date, time, and location will be announced in due course by the FIG to the parties concerned which are entitled to be present at the draw.

11. COMPETITIONS FORMAT AND PROGRAMME

These restricted Teams and Individual Gymnasts World Championships comprise exercises on each of the various apparatus to determine the Team World Champion (CIV), the All-Around World Champion (CII) and the World Champion on each Apparatus (CIII). Competitions I (Qualifications), II, III and IV will be conducted according to the 2015 FIG Technical Regulations, including Section 2 for Artistic Gymnastic, Reg. 5.1 and 5.2.

These World Championships also represent the 1st Olympic Qualification for the 2016 Olympic Games in Rio de Janeiro. They will serve to qualify for the 2016 Olympic Games the 8 best ranked MAG and 8 best ranked WAG teams as well as the MAG and WAG individual apparatus medal winners (gold, silver and bronze) if not qualified with another criteria. They will also determine the teams and individual gymnasts authorized to take part in the 2nd Olympic Qualification.

The Provisional training, warm-up, and competition schedules will be included in the workplan.



Provisions exceptionally approved by FIG Executive Committee for these World Championships:

FIG Executive Committee decided to implement the following as exceptions for these World Championships:

- A spectacular 224m2 LED screen (known as the "Mega Wall") will be installed behind the Field of Play. The "Mega Wall" will be used not only to enhance each segment of the event experience for gymnasts, officials and in-venue and broadcast spectators, but also sports presentations and venue entertainment (Appendix 3).
- The Judges' panels and the Apparatus Supervisor will sit in line outside the Field of Play (Appendix 3).
- The Floor Exercise Line Judges will be removed from the Field of Play (podium) and be seated at each end of the Floor Exercise Judges' panels and the Apparatus Supervisor outside the Field of Play. They will be supported by a video system. The Line Judges will determine an out of bounds by viewing:
 - The front and side lines directly by watching the floor (not through the monitor).
 - The back line through the video monitors with two cameras placed one on each side.
 - The video system will not offer a replay for the judges.

While no flags will be used to register out of bounds, a red light placed centrally to the line on each side of the floor podium will be activated to alert coaches, gymnasts and the crowd of a line penalty. The red light will stay on for three seconds.

- The Vault Line Judge will be seated on an elevated platform behind the Vault Podium. There will be no special video system for Vault line judging. A red light placed on the edge of the podium will be used to show out of bounds. The red light will stay on for three seconds.
- The MAG and WAG Apparatus Podiums will be positioned on the Field of Play as indicated in Appendix 3.
- The Judges will be seated prior to commencement of gymnasts' sports presentation.
- The groups, teams or individual gymnasts will be announced by the speaker as they come onto the stage. After they have been announced, they will make their way across the arena to the foot of the podium steps for their apparatus. When all groups, teams or individual gymnasts have arrived at their podium, a signal will be given for them to either go up onto the podium together and commence their touch warm up for CI, CII and CIV (as per FIG Rules) or begin their competition individually for CIII.
- At the commencement and conclusion of their exercise, the gymnasts will present themselves and acknowledge the D judge.
- As the gymnasts will march to their next Apparatus, the focus will be on audience entertainment.
- Podium Training will replicate the competition environment for the gymnasts and officials involving any deviation from the standard presentation.
- While the Federations' flags will not permanently be displayed within the venue, they will be used in the following aspects of the Championships:
 - the Opening Ceremony will feature the flags of all competing Federations through the "Parade of Flags"
 - As part of the pre-show for each Competition Session, a specially commissioned digital animation/film on the 'Mega Wall' will celebrate all competing Federations and their flag.
 - During the Finals, the flags of all competing Teams and Gymnasts will be displayed on the 'Mega Wall' as part of the Gymnasts' Entrance to the Field of Play.
 - Flags will be utilised as normal for victory ceremonies.

12. BIOGRAPHIES

Information on biographies will be provided to all the participating federations in the workplan.

13. PUBLICITY

As the Code of Points foresee deductions should FIG Publicity Rules on attire and equipment not be respected, each Federation may fill-in the online Publicity form if deemed necessary from now until **27 July 2015**, or at the very latest until **23 September 2015** in order to have it approved. While the Publicity Rule Chart is available on the FIG website under "Rules" for additional information, you may also contact directly the Media Department at media@fig-gymnastics.org for further assistance if required.

14. EQUIPMENT

The Manufacturer Supplier will be Gymnova. While the color of the Floor Exercise mat will be white, please refer to Appendix 1 for the complete List of Apparatus which will be used, including the certified product names and article numbers.

15. VISA

Please verify immediately with the British Embassy or Consulate in your country if a visa is required for your travel to the United Kingdom.

Visa request letters will only be generated once Member Federations request each individual delegate's accreditation. The Championships Portal will automatically recognize those Member Federations that require an official invitation letter from the country specified in the 'Country of Issue' field. Please be advised that accreditation requests will only be approved in conjunction with FIG registrations.

The LOC will be happy to assist each Delegation member with an official invitation letter, provided that the accreditation request is made via the LOC Championships Portal (Appendix 4) as soon as possible but by no later than **27 July 2015**.

General visa information for the United Kingdom can also be obtained as follows:
<https://www.gov.uk/sports-visit-visa/overview>

16. TRANSPORTATION

International transportation

The international transportation to Glasgow will be at each delegation's own expenses. The FIG and the LOC strongly recommend that each Federation take cancellation insurance for their international transportation.

Local transportation

Accredited delegations who will:

- stay at one of the official hotels and
- book their accommodation through the LOC via the **LOC** Championships Portal (Appendix 4) and
- upload arrival and departure information onto the **LOC** Championships Portal (Appendix 4) by **23 September 2015** at the latest

will be provided with local transportation from Glasgow International Airport, Glasgow Central Railway Station, Queen Street Railway Station or Buchanan Bus Station to the official accreditation center / hotels and back. This service will be organized by the LOC.

A shuttle service will be available for the local transportation of all accredited persons (if applicable) from the official hotels to the training, warm-up, and competitions halls as well as to any other official functions and back as needed.

Member Federations who do not stay at one of the official hotels, do not book their accommodations through the LOC and do not upload arrival and departure information onto the **LOC** Championships Portal (Appendix 4) in due course will not be entitled to use the local transportation system and will be responsible to be on time.

Other Transport Hubs

Member Federations that arrive at the following airports and request transport via the LOC will occur the following charges:

Location	Vehicle	Cost (One way)
Edinburgh Airport	People carrier (up to 6 people and bags)	£90.00
	Coach (48 seats)	£400.00
Glasgow Prestwick Airport	People Carrier (up to 6 people and bags)	£75.00
	Coach (48 seats)	£400.00

17. ACCOMMODATION

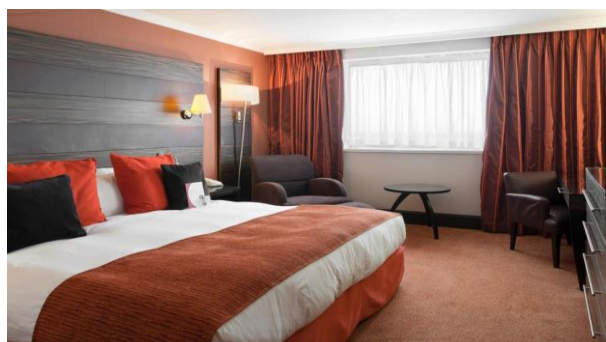
The LOC is delighted to provide FIG and official delegations members with the following selection of official hotels:

Official Hotel for FIG

Crowne Plaza - Category I

On campus, fully covered walkway to training and competition venue
Congress Road, Glasgow, Glasgow, G3 8QT / www.crowneplaza.com/Glasgow

As this hotel is in walking distance from the venue this hotel will not be serviced by the Championships shuttle bus. If an accredited person has accessibility needs and their hotel is not serviced by the Championships Shuttle Bus Service, the LOC will provide a transport service



Official Hotel for Judges (FIG invited D and R Judges as well as Delegations Judges only)

Premier Inn – Category II

Pacific Drive, Glasgow, Lanarkshire, G51 1DZ
[www.premierinn.com/Glasgow Pacific Quay](http://www.premierinn.com/Glasgow_Pacific_Quay)

As this hotel is in walking distance from the venue this hotel will not be serviced by the Championships shuttle bus. If an accredited person has accessibility needs and their hotel is not serviced by the Championships Shuttle Bus Service, the LOC will provide a transport service



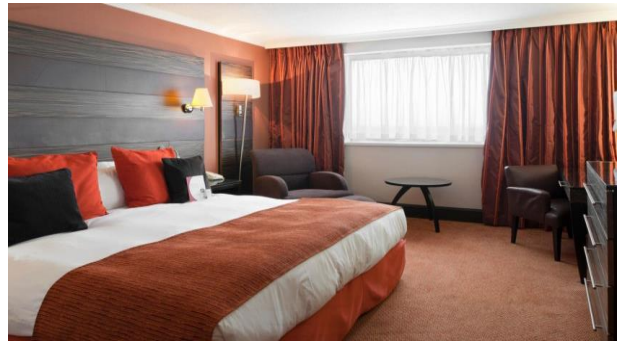
Official Hotel for Delegations

Crowne Plaza - Category I

On campus, fully covered walkway to training and competition venue
Congress Road, Glasgow, Glasgow, G3 8QT / www.crowneplaza.com/Glasgow

Please note that there is limited availability for Delegations at the FIG Hotel

As this hotel is in walking distance from the venue this hotel will not be serviced by the Championships shuttle bus. If an accredited person has accessibility needs and their hotel is not serviced by the Championships Shuttle Bus Service, the LOC will provide a transport service



Hilton Hotel - Category I

1 William Street, Glasgow, G3 8HT
www.placeshilton.com/glasgow

This hotel will be serviced by the Championships shuttle bus service.



Hilton Garden Inn - Category II

On campus
Finnieston Quay, Glasgow, G3 8HN / www.hiltongardeninn3.hilton.com

As this hotel is in walking distance from the venue this hotel will not be serviced by the Championships shuttle bus. If an accredited person has accessibility needs and their hotel is not serviced by the Championships Shuttle Bus Service, the LOC will provide a transport service

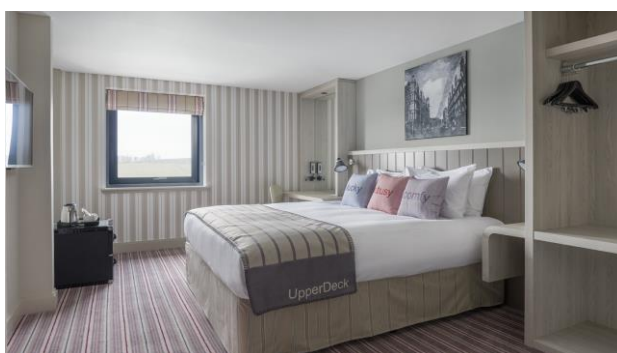


Village Hotel - Category II

Glasgow Pacific Quay, Glasgow, G51 1DA

www.village-hotels.co.uk/hotels/glasgow

This hotel will be serviced by the Championships shuttle bus service.



Marriott Hotel - Category II

500 Argyle Street, Glasgow, G3 8RR

www.marriott.co.uk

This hotel will be serviced by the Championships shuttle bus service.



Jurys Inn - Category II

80 Jamaica Street, Glasgow, G1 4QG

www.jurysinns.com/hotels/glasgow

This hotel will be serviced by the Championships shuttle bus service.



Campanile Hotel - Category III

On campus

10 Tunnel Street, Glasgow, Lanarkshire G3 8HL / www.campanile-glasgow-secc.co.uk

As this hotel is in walking distance from the venue this hotel will not be serviced by the Championships shuttle bus. If an accredited person has accessibility needs and their hotel is not serviced by the Championships Shuttle Bus Service, the LOC will provide a transport service



Menzies Hotel - Category III

27 Washington Street, Glasgow, G3 8AZ

www.menzieshotels.co.uk

This hotel will be serviced by the Championships shuttle bus service.



Euro Hostel - Category IV

318 Clyde Street, Glasgow, Lanarkshire, G1 4NR

www.euro-hostels.co.uk/glasgow

This hotel will be serviced by the Championships shuttle bus service.

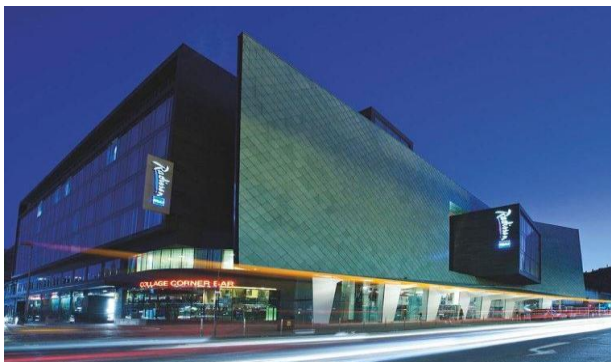


Official Hotel for Media and Press

Radisson Blu – Category I

301 Argyle Street, Glasgow, G2 8DL
www.radissonblu.co.uk/Glasgow

This hotel will be serviced by the Championships shuttle bus service.



Holiday Inn Express Riverside – Category III

122 Stockwell Street, Glasgow, G1 4LW
www.expressglasgow.co.uk

This hotel will be serviced by the Championships shuttle bus service.



Hotel Categories and Prices

Category I Hotel Crowne Plaza - All rates include VAT and service charges.

Crowne Plaza is of the highest standard and is excellent quality accommodation. With breakfast per room per night:

- Single room occupancy: £122
- Double / Twin room occupancy: £147

Category I Hotels OTHER than the Crowne Plaza - All rates include VAT and service charges.

The Category I Hotels (OTHER than the Crowne Plaza) are of the highest standard or are excellent quality accommodation. With breakfast per room per night:

- Single room occupancy: £140
- Double / Twin room occupancy: £165

Category II Hotels - All rates include VAT and service charges.

Category II Hotels are good quality accommodations located either on campus or a short journey from the hall via the Championships shuttle bus service. With breakfast per room per night

- Single room occupancy: £125
- Double / Twin room occupancy: £150

Category III Hotels - All rates include VAT and service charges.

Category III Hotels are good quality, lower-priced hotels. With breakfast per room per night

- Single room occupancy: £115
- Double / Twin room occupancy: £140

Category IV Hotels - All rates include VAT and service charges.

Category IV is the low-cost self-catering accommodation which is located a short journey from the venue via the Championships shuttle bus service. With breakfast per room per night

- 4 Person Room : £135.00
- 8 Person Room : £235.00

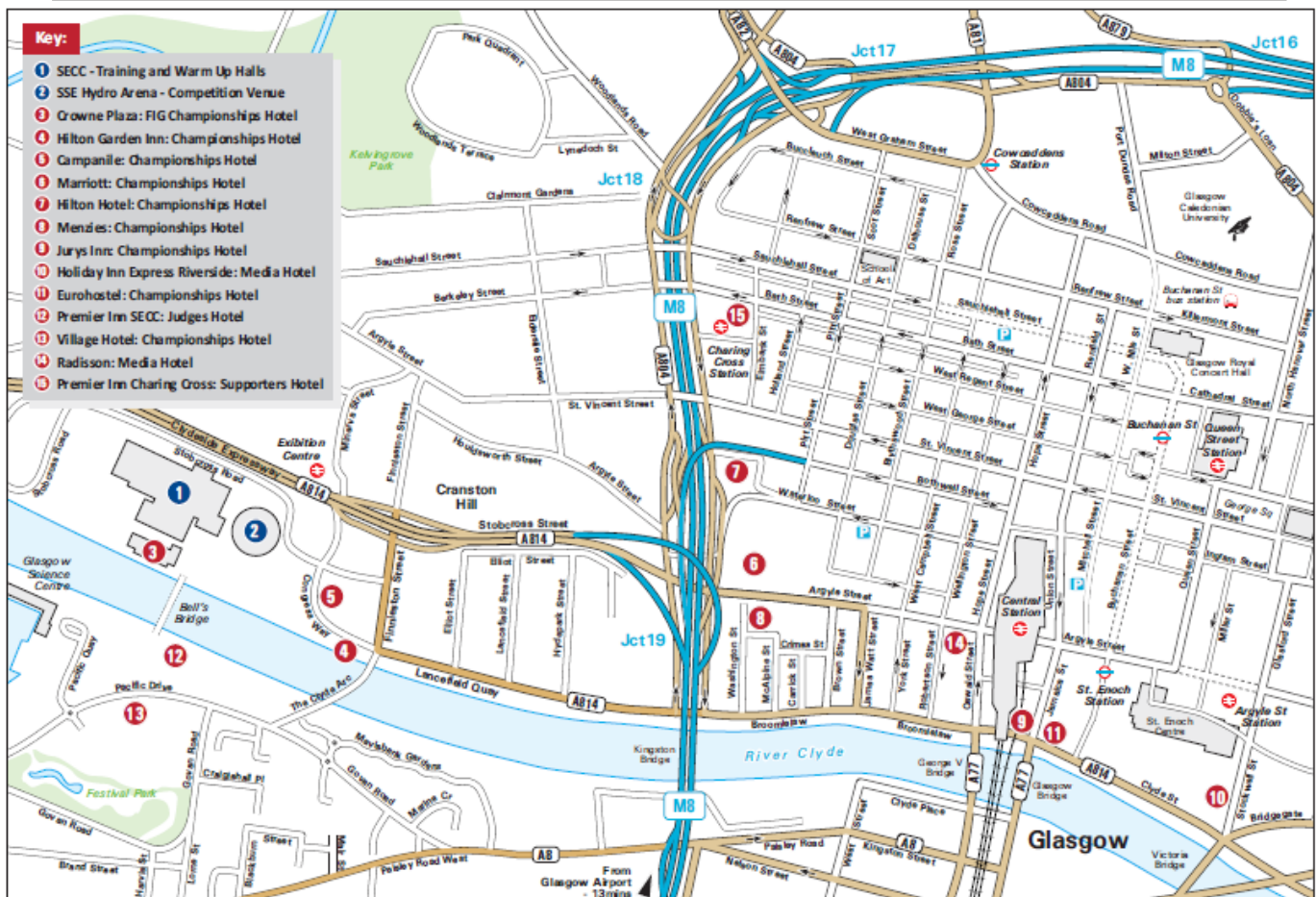
Delegations' Fan Packages

The LOC is delighted to advise of 2015 World Gymnastics Championships Fan Packages which offer two accommodation options offering 4 or 6 nights in the city including event tickets and other exclusive benefits. Exclusive packages are available for purchase and can be booked by visiting www.2015worldgymnastics.com/tickets/fan-packages

For tourists, more hotel information can be found through the following websites:

- www.peoplemakeglasgow.com
- www.visitscotland.com

Distances between the Competition/Training/Warm-up halls, Airport and Official Hotels



Nbr	Hotel	To Competition Hall Warm-up Hall/Training Halls	Gym	Pool	Free WiFi	Transport
3	Crowne Plaza	1 minute walk (50 metres)	✓	✓	✓	
4	Hilton Garden Inn	2 minute walk (100 metres)	✓		✓	
5	Campanile at the SECC	2 minute walk (100 metres)			✓	
6	Marriott Hotel	15 minute walk (1km) 3 minute drive	✓	✓	✓	✓
7	Hilton Hotel	20 minute walk (1.5km) 5 minute drive	✓	✓	✓	✓
8	Menzies Hotel	17 minute walk (2km) 5 minute drive	✓	✓	✓	✓
9	Jurys Inn	25 minute walk (2km) 6 minute drive			✓	✓
10	Holiday Inn Express Riverside	30 minute walk (2.5km) 8 minute drive			✓	✓
11	Euro Hostel	25 minute walk (2km) 6 minute drive			✓	✓
12	Premier Inn	4minute walk (1km) 5 minute drive			✓	
13	Village Hotel	7 minute walk (600 metres, via foot bridge) 5 minute drive	✓	✓	✓	✓
14	Radisson Blu	25 minute walk (2km) 6 minute drive	✓	✓	✓	✓

Reservations

Accommodation will be provided free of charge by the LOC to every competing gymnast only from each Federation. This bed and breakfast accommodation will be provided for up to 16 nights during the course of the Championships. The gymnasts' accommodation will be in twin rooms and non-transferable in either a Category II or Category III dependent on hotel capacities. Member Federations wishing to stay in a category I hotel will be required to pay a £15.00 supplement per gymnast per night. Federations will be required to pay accommodation costs for all supplementary staff and team members.

A four night accommodation package (including breakfast) at the FIG Official Hotel will also be provided free of charge by the LOC for FIG Council members to attend the Championships with an arrival on Thursday 29 October and a departure in Monday 2 November 2015. Invites will be sent directly to Council Members and will include information on how to book this package.

The following steps must be followed to book the official Hotels:

- 1) Log onto the **LOC** Championships Portal (Appendix 4) and select the Member Federation's preferred three hotels and advise of accommodation numbers. This is required by **27 July 2015** at the very latest.
- 2) Upload to the **LOC** Championships Portal (Appendix 4) "Accommodation by Name" by **23 September 2015** at the very latest.

FIG affiliated member Federations should request their accommodation as a matter of priority as rooms are limited and will be allocated strictly in order of booking receipt (i.e. "first come, first served") and based on each Delegations' group size, and the hotel preferences. Federations will be required to request three hotels in order of preference. If all three of these options are not available due to the hotels already being fully allocated, the LOC will then contact the Federation directly to discuss alternative options.

To secure your preferred hotel, it is strongly recommended to upload the accommodation request and transfer deposit well in advance of the due dates of **27 July 2015** and **23 September 2015** respectively.

Once Member Federations have requested their hotel preferences the Championships Accommodation Team will send an email confirming receipt of hotel request. This email will also include the Member Federations invoice based on 50% of the total value of the delegations selected first choice accommodation, including meal packages if applicable. The hotel request will only be processed by the Accommodation Team once deposits are received.

Please be advised that deposits are calculated on Member Federations first choice and this does not guarantee you will be allocated in your first preferred hotel. Should your Member Federation be allocated your second or third choice of accommodation the total deposit will be deducted of the final balance due.

Member Federations should **not** book directly with the hotel as local transportation and other negotiated inclusive services (e.g. free WiFi) will then **not** be offered.

Member Federations confirmed accommodation will be available to view via the **LOC** Championships Portal (Appendix 4) on **Thursday 31 July 2015**.

Media accommodation can be booked by visiting: <http://www.cseplc.com/events/2015-world-gymnasticsmedia/>

18. MEALS

Reservations

The meal plan is not compulsory and the delegations are free to make their own arrangements to eat at their own expenses. Meals reservations for the Member Federations can nevertheless be made in advance by requesting meal packages on the **LOC** Championships Portal (Appendix 4) at the time of selecting accommodation preferences and by **27 July 2015** at the very latest. Breakfast will be included in the price of each of the official hotels and will be served each day in the respective hotel from 07h00 to 10h00.

Arrangements

The LOC daily meal arrangements will be proposed as follows:

For Member Federations who book their accommodation with lunch and dinner included for the entirety of their stay, the LOC will provide lunch from 11h30 to 14h30 and dinner from 18h00 to 23h00 each day in their hotel restaurant. Please note that Member Federations cannot pre-book individual days, meal packages must be booked for the duration of the stay. Prices are as follows and requirements should be uploaded onto the **LOC** Championships Portal (Appendix 4):

Meal Option	Category I Hotels	Category II Hotels	Category III Hotels	Category IV Hotels
Lunch and Dinner	£40.00	£38.00	£36.00	£36.00

During the MAG and WAG Podium Trainings and Qualifying competitions (C-I), only the MAG and WAG Judges drawn to judge in CI will receive a meal from the LOC at the Competition Hall. During Podium Training Days, MAG and WAG Judges **not** drawn to judge in CI will have to purchase a meal via their Federation and eat either in the Judge's Hotel or in the SECC venue. Further information regarding breaks and meal times during Podium Trainings and CI will be given at the judges' instructions.

Payment for Rooms and Meals

Payment for the accommodations and meals must be made via bank transfer to:

Beneficiary	Corporate & Sporting Events Management Limited
Account	10924775
Bank	05-03-03
IBAN	GB83YORK05030310924775
SWIFT/BIC	YORKGB21303

All bank fees in connection with the bank transfers must be covered. Please state the name of your federation, the contact person and the payment purpose on the transfer (i.e “SUI_John Smith_2015 ART WCH Accommodations and Meals Payment”). The payment must be made in **GBP only**.

The pre-payment to the LOC of 50% of the total costs of the accommodations and meals must be made once the Member Federation receives their invoice from the 2015 World Gymnastics accommodation and meals team following the Member Federations accommodation and meals requirements being submitted via the **LOC** Championships Portal (Appendix 4) by no later than **27 July 2015**. Following receipt of this Accommodation and Meals Booking and the deposit payment of your reservation, a confirmation will be sent to you by the LOC detailing all booking particulars and the final balance on Thursday 31st July.

The final payment to the LOC of the remaining 50% for all accommodations and meals will be required by no later than **23 September 2015**.

Failure to forward the payment by the required dates will result in the accommodation and meals reservations being cancelled and in the deposit payment being forfeited.

All personal expenses (in terms of hotel services, laundry, room services, telephone, mini bar, etc.) are not included. Any charges occurred must be settled directly with the hotel prior to departure. Any outstanding accounts will be the Member Federations responsibility.

Cancellation Policy for Rooms and Meals

- Rooms and meals cancelled until 27 July 2015 at the very latest will be subject to a cancellation fee of 0%.
- Rooms and meals cancelled from 28 July until 27 August 2015 at the very latest will be subject to a cancellation fee of 50% to be paid by the Federation concerned. Therefore Member Federations will not have their deposits returned.
- Rooms and meals cancelled from 28 August until 23 September 2015 at the very latest will be subject to a cancellation fee of 75% to be paid by the Federation concerned.
- Rooms and meals cancelled from 24 September 2015 until the arrival of the delegations on site or “no show” will be subject to a cancellation fee of 100% to be paid by the Federation concerned.

Farewell Banquet

Accredited Delegation members (with the exception of E- and R- media), who will stay at one of the official hotels and will book their accommodation through the LOC will receive a free ticket for the Farewell Banquet. All other persons wishing to attend the Banquet will be entitled to do so, provided that a request is sent to the LOC by emailing Delegation@2015worldgymnastics.com requesting the number of tickets required. The amount of £50.00 per person is required to be paid in full to the LOC by **27 July 2015**. Please note there is limited availability of tickets to purchase.

Payment

Payment for the Farewell Banquet (if applicable) must be made via bank transfer to:

Beneficiary	Culture and Sport Glasgow
Account	83 44 00
Bank	00678850
IBAN	GB26 RBOS8344 0000 6788 50
SWIFT/BIC	RBOS GB 2L

All bank fees in connection with the bank transfers must be covered. Please state the name of your federation, the contact person and the payment purpose on the transfer (i.e “SUI_John Smith_2015 ART WCH Farewell Banquet Payment”). The payment must be made in **GBP only**.

19. INSURANCE

The Host Federation, the LOC and the FIG will not be held responsible for any liabilities in case of accidents, illness, repatriation and the like. The FIG TR (Section 1, article 12.10) foresee that all participating Federations are responsible for making their own arrangements to have the necessary valid insurance coverage against illness, accidents and for repatriation for all the members of their Delegation.

Information from the LOC

Upon arrival in Glasgow each delegation must provide a copy of their insurance policy to the LOC which will then be copied and filed. Delegation members with insufficient insurance cover must inform the LOC in writing in advance but by no later than 23 September 2015. The LOC will subsequently offer insurance at the Federations own charge as follows: £10.00 per person per day.

20. WORKPLAN

The workplan will be sent to all the participating federations six weeks at the latest before the start of the competitions.

21. DOPING CONTROLS

Doping controls will be made as per the Doping Control Regulations of the FIG and WADA.

22. OFFICIAL HOSPITAL

Information on the Official Hospital will be included in the workplan

23. WAG MUSIC

While the LOC guarantees the respect for the rights of author and broadcasting of the musical works, each National Gymnastics Federation will also have to confirm that the Floor Exercise music of their WAG gymnast does not violate any copyrights and that it can be broadcasted within sports. This confirmation will have to be made at the time of the Nominative Registration.

Each National Gymnastics Federation will also be requested to inform on the duration, composer, title and artist of the Floor Exercise Music used.

24. WORKSHOP (TBC)

While no WAG workshop will be organized during these World Championships, information on the MAG Workshop will be included in the workplan (TBC).

25. SUMMARY OF THE DEADLINES AND PAYMENTS

For the FIG

FIG Online Registrations	Opening Date	Closing Date
Provisional Registration	Now	26 May 2015 until midnight Swiss Time
Definitive Registration	27 May 2015	27 July 2015 until midnight Swiss Time
Nominative Registration	28 July 2015	23 September 2015 until midnight Swiss Time
Media Accreditation	Now	02 October 2015 until midnight Swiss Time

Online Publicity	Opening Date	Closing Dates
Publicity (not compulsory)	Now	27 July 2015 (first) 23 September 2015 (last)

Request for Supplementary Accreditations	Deadline
Written request	27 July 2015

Payment	Deadline
Registration Fee	27 July 2015

For the LOC

LOC Championships Portal	Deadline
Visa Request (not compulsory)	27 July 2015
Travel Schedule (Arrivals)	23 September 2015
Travel Schedule (Departures)	23 September 2015
Accommodations Numbers	27 July 2015
Accommodations by Name	23 September 2015
Meals (not compulsory)	27 July 2015

Insufficient Insurance Cover (if applicable)	Deadline
Written request	23 September 2015

Farewell Banquet (if applicable)	Deadline
Written request	27 July 2015

Payment	Deadline
Accommodation Costs (first 50%)	27 July 2015
Accommodation Costs (last 50%)	23 September 2015
Meals Costs (first 50%)	27 July 2015
Meals Costs (last 50%)	23 September 2015
Farewell Banquet (if applicable)	27 July 2015
Accreditations at the charge of the Delegations or the FIG Authority	27 July 2015

Sincerely Yours,



André Gueisbuhler
Secretary General

APPENDICES

- Appendix 1 – List of Apparatus
- Appendix 2 – FIG License Rules
- Appendix 3 – MAG/WAG FOP Layouts
- Appendix 4 – LOC Championships Portal User Guide